



# **Governor's Advisory Committee on Western North Carolina Recovery**

January 9, 2026

10:00 am – 12:00 pm

# Today's Agenda

Call to Order, Remarks, and Introduction of New Members |  
*Mayor Esther Manheimer, Co-Chair*

WNC Recovery Updates / *Matt Calabria and Emily Gangi,  
GROW NC*

Regional Recovery Coordination: Engagement Team Based in  
Western North Carolina / *Scott Elliott, GROW NC*

Progress on Landslide Mapping and Early Warning System  
Development | *David Korte, NC Department of Environmental  
Quality*

Hazard Mitigation Grant Program: Process for Homeowner  
Acquisitions, Elevations, and Infrastructure Project  
Applications / *Will Ray, Division of Emergency Management, NC  
Department of Public Safety*

Remarks | *Governor Josh Stein*

Next Steps / *Matt Calabria, GROW NC*

Adjourn

Photo: Isothermal Community College (Rutherford County)





# Introduction of New Members

Mayor Esther Manheimer, Co-chair



# WNC Recovery Updates

Matt Calabria, Director, GROW NC

Emily Gangi, Chief Deputy Director, GROW NC



# Major recovery efforts underway

## Rebuilding Safe Housing

- Residents received \$542M+ in FEMA Individual Assistance
- 6,900 households received temporary housing
- 7,300+ applications received for HUD single-family housing program
- 550+ homes repaired by volunteer organizations such as Baptists on Mission and Habitat for Humanity with state funds

## Restoring our Infrastructure

- 7.1m+ cubic yards of right-of-way debris removed
- 8.4m+ cubic yards of waterway debris removed
- All site assessments (more than 6,500 in total) completed in State's Private Roads & Bridges Program
- \$33.7M in FEMA funds authorized to repair private roads and bridges

## Revitalizing our Economy and Communities

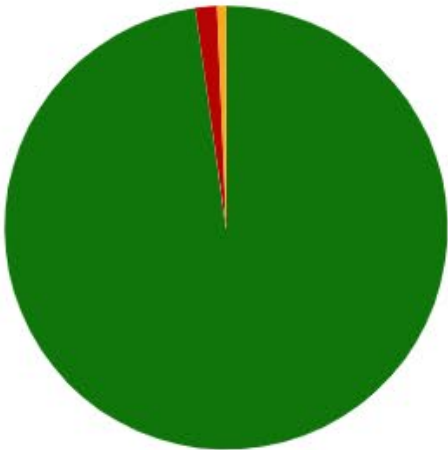
- \$55M in state and philanthropically funded small business grants disbursed, with more than 2,100 recipients
- \$423M+ in SBA loans offered
- \$39M+ in disaster unemployment assistance distributed
- \$148M+ in loans offered to 90 local governments



# NC Department of Transportation reopened more than 98% of state roads (97.8% fully reopened, 1% partially reopened)

Total Incidents  
**1,527**  
since beginning of Storm

Total Closures  
**1,517**  
since beginning of Storm

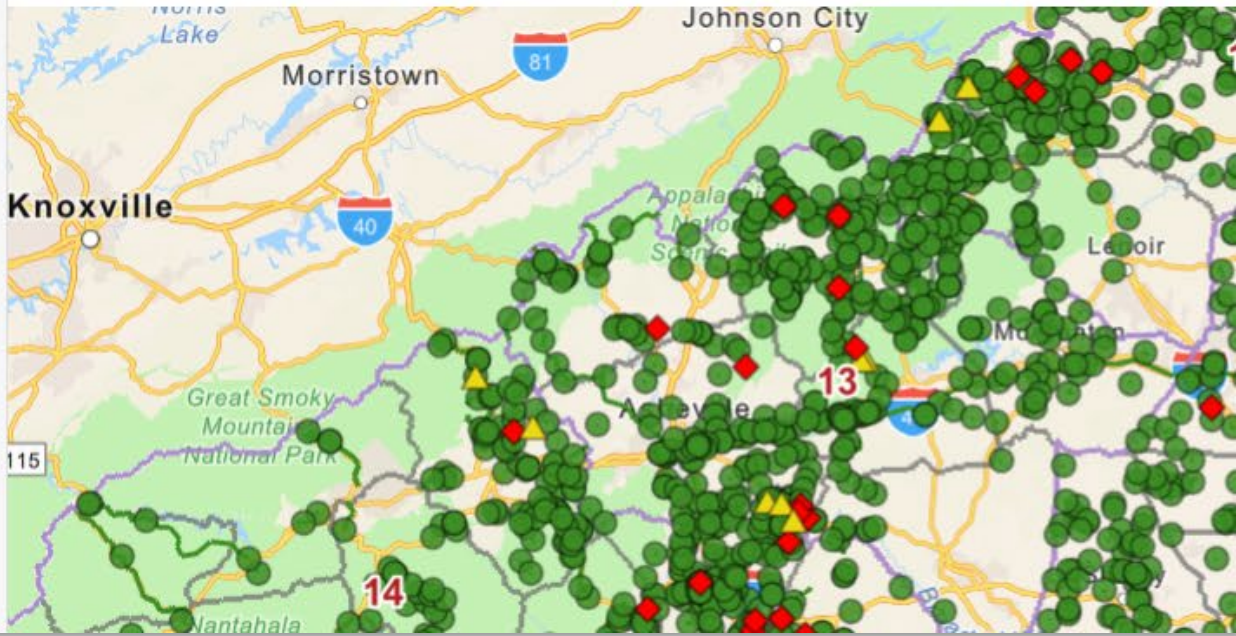


- Fully Open 1,493
- Current Closed 24
- Partial Access 10

**1,493**  
Fully Open

**24**  
Current Closed

**10**  
Partial Access





# Select State Program Updates





## Applications Remain Open – Private Roads and Bridges Reimbursement Deadline Feb. 28

The application window is open for reimbursements through the NC-PRB program for private road and bridge repairs that are already completed.

Part of \$25M appropriation from the NC General Assembly. Reimbursements are permitted to cover up to 50 percent of a project's total cost.

*(Pictured: A completed private bridge in Buncombe County)*



[wncrecovery.nc.gov/recovery-resources/nc-private-road-and-bridge-reimbursement-program](https://wncrecovery.nc.gov/recovery-resources/nc-private-road-and-bridge-reimbursement-program)



# State Rail Plan: Public Comment Period Ends January 20

The Comprehensive State Rail Plan proposed by the North Carolina Department of Transportation establishes the vision for rail transportation across the state for the next 30 years.

This plan identifies a program of strategic freight, passenger, and rail safety investments that support safe and reliable rail transportation and spur economic development statewide.

The Comprehensive State Rail Plan was last approved and adopted in 2015. Share what you think about the proposed new Comprehensive State Rail Plan and the projects listed in the plan.

The deadline for sharing public comment is January 20, 2026.



For more information: [publicinput.com/nc-staterailplan](https://publicinput.com/nc-staterailplan)

# Parks and Recreation Grants Available Helene Recovery Fund

- The Helene Recovery Fund provided through the Parks and Recreation Trust Fund (PARTF) offers dollar-for-dollar matching grants to local governments for the acquisition and/or development of park and recreational projects to serve the general public.
- Projects must be on a single site.
- No maximum award amount is specified.
- **Submit applications by 5 PM on January 30, 2026.**



For more information: [ncparks.gov/about-us/grants/partf-helene-recovery-fund](https://ncparks.gov/about-us/grants/partf-helene-recovery-fund)

# Grant Funding to Support Recycling and Waste Reduction in WNC

Supports WNC communities in rebuilding and strengthening waste reduction and recycling systems following Hurricane Helene. The program provides up to \$25M in grants over multiple phases.

Eligibility: Local governments may apply for up to \$5M per project, with no local match. Eligible projects may include but aren't limited to:

- Construction or improvement of recycling or composting facilities;
- Development of regional collection (hub-and-spoke) systems;
- Upgrades to convenience centers or household hazardous waste programs;
- Purchase of recycling trucks, containers, or carts;
- Related feasibility studies or education and outreach

Deadline: January 30, 2026



For more information: [Helene Recovery Recycling Infrastructure Grant Program](#)

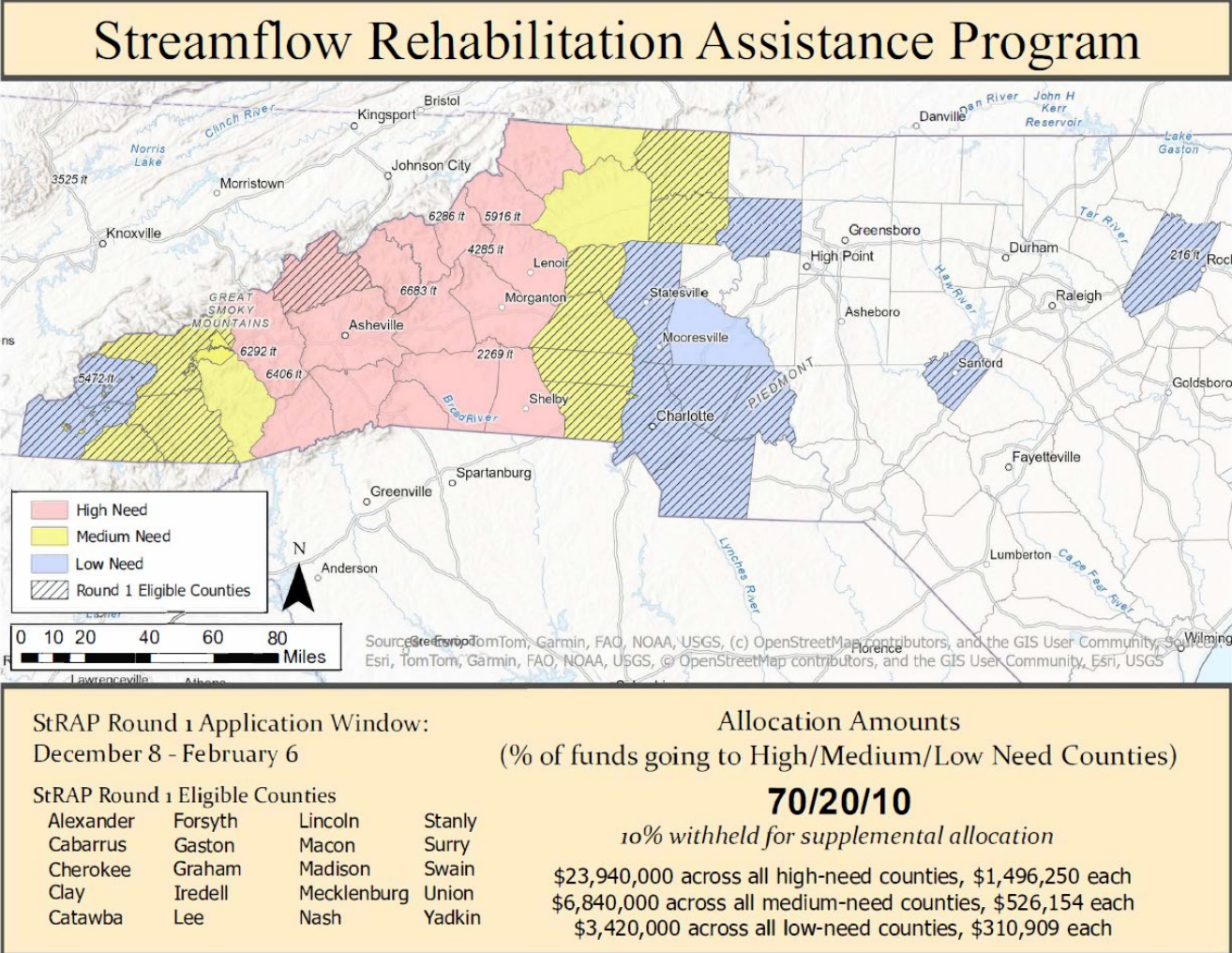


# Streamflow Rehabilitation Assistance Program (StRAP)

## Applications Open for Round 1 Eligible Counties

Funding to repair stream damage caused by Hurricane Helene. StRAP has \$38M available for grants over multiple rounds (by eligible county groupings). Soil & Water Conservation Districts, political subdivisions (city/county govt., water/sewer district, sanitary district, etc.), and nonprofit organizations are eligible to apply.

Deadline for Round 1 counties: 5pm, February 6, 2026 (additional application windows will be announced)



For more information: [Streamflow Rehabilitation Assistance Program](#)

# Applications Open for NC Small Business Infrastructure Grants

Part of \$55M appropriation from the NC General Assembly to assist small businesses by expediting infrastructure repairs impacting the operation and patronage of small businesses in the affected area.

**Nearly \$32 million remaining; max award per project: \$1 million**

**Eligibility:** Local governments impacted by Hurricane Helene and designated under a major disaster declaration from Helene. Special consideration given to local governments in Tier 1 and Tier 2 Counties.

Timeline: Applications accepted on a rolling basis;  
awards announced:

- June 30, 2025 – \$7.3m announced
- November 12, 2025 – \$13.8m announced
- February 28, 2026 (anticipated)
- June 30, 2026 (anticipated)

For more information: [commerce.nc.gov/SmBIZ](https://commerce.nc.gov/SmBIZ)



# InSPIRe—the Insurance Supplement Program for Inclusive Recovery

A pilot grant initiative supporting small businesses in Western NC impacted by Hurricane Helene.

Offers grants up to \$5,000 for businesses that filed Helene-related insurance claims that were denied or partially denied.

Expert assistance and connection to additional resources for small business recovery are also offered.



Beyond immediate relief and recovery support, this program is designed to gather data on insurance gaps and recovery needs, with the goal of building better solutions for the future of the small business community.

To ask questions about this grant program, send an email to [inspire@ccifund.org](mailto:inspire@ccifund.org).

**Deadline for businesses and nonprofits to apply: January 15, 2026**

For more information: [ccifund.org/inspire](https://ccifund.org/inspire)



# NC Department of Insurance Consumer Complaints

The North Carolina Department of Insurance aims to respond to consumers' insurance-related questions and complaints, assist consumers in resolving those complaints whenever possible, and help consumers understand their options for dealing with insurance-related matters.

**If you have questions, the Consumer Services Division of the Department of Insurance may be able to help.**

Toll-free: [855-408-1212](tel:855-408-1212)

**Online Request Assistance/ File A Complaint**



**Assistance or File a Complaint**

For more information: [Assistance or File a Complaint | NC DOI](#)



# Select Federal Program Updates

## RENEW NC SINGLE-FAMILY HOUSING PROGRAM

# Deadline extended – Apply by January 31, 2026



### In-Person

Visit any **Renew NC Program Intake Center** open **Monday** through **Saturday** from **8 AM** to **6 PM**



### Online Portal

Complete an application online at **[www.RenewNC.org](http://www.RenewNC.org)**



### Mobile App

Download the “**Renew NC Housing Program**” mobile app from the Google Play Store or the Apple App Store



### Phone Call

Call **888-791-0207** to be connected to a Case Manager

### Asheville

128 Bingham Rd.  
Suite 875  
Asheville, NC 28806

### Boone

379 New Market Blvd.  
Suite 1  
Boone, NC 28607

### Marion

364 US Highway 70  
Suite 3  
Marion, NC 28752

Additional pop-up center locations and hours can be found at [renewnc.org/contact](http://renewnc.org/contact).





# Renew NC Single-Family Housing Dashboard

1/7/2026 10:34:48 AM

Latest Data Refresh

Applications in Progress  
But Not Submitted

2,031

Total Applications  
Submitted

7,334

Total Active  
Applications

5,113

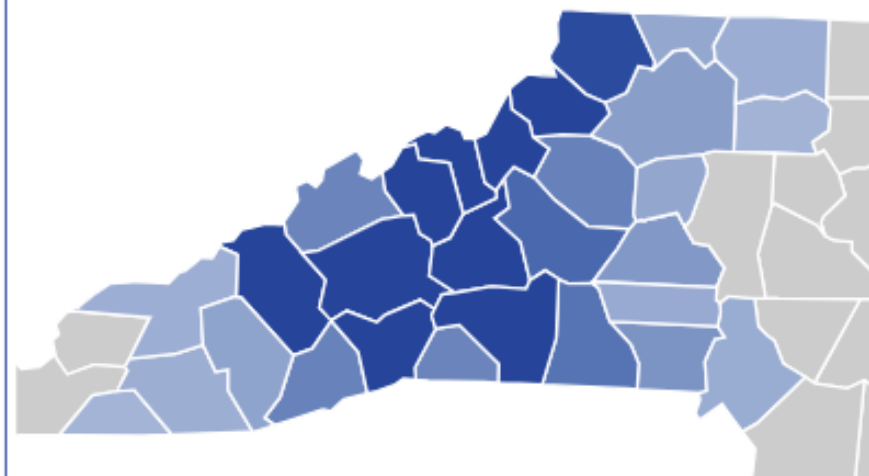


Inactive or Ineligible  
Applications

2,221



Applicants by County



Application Submission Deadline

January 31, 2026

Verified Eligible Phase and Priority



Phase	Priority 1	Priority 2	Priority 3	Priority 4	Total
Phase 1	960	181	68	8	1,217
Phase 2	150	50	10	6	216
Phase 3	29	6	N/A	N/A	35
Phase 4	291	10	N/A	N/A	301

Hover over the  
information bubble for  
Phase and Priority  
definitions.

Applications will be  
processed beginning  
with Phase 1, followed  
by Phase 2, etc.

Active Cases by Workflow Status

2,816



Intake Review

121

Eligibility

763

DOB & Damage  
Assessment

608

Environmental Review

206

QC Review

87

Award Determination

75

Pre-Construction

11

Construction

11

Closeout

Excludes applications pending ineligibility or other review that are included in Total Active Applications count.



# Renew NC Single-Family Housing Dashboard

1/7/2026 10:34:48 AM  
Latest Data Refresh

PHASE	ELIGIBILITY	PROCESSING PRIORITY
Phase 1	Income below 60% AMI, Repairs not completed	<ol style="list-style-type: none"><li>1. HUD MID with needs</li><li>2. HUD MID without needs</li><li>3. State MID with needs</li><li>4. State MID without needs</li></ol>
Phase 2	Income between 60–80% AMI, Repairs not completed	<ol style="list-style-type: none"><li>1. HUD MID with needs</li><li>2. HUD MID without needs</li><li>3. State MID with needs</li><li>4. State MID without needs</li></ol>
Phase 3	Income below 80% AMI, Repairs completed (reimbursement only)	<ol style="list-style-type: none"><li>1. HUD MID</li><li>2. State MID</li></ol>
Phase 4	Income between 81–120% AMI, Repairs not completed	<ol style="list-style-type: none"><li>1. HUD MID</li><li>2. State MID</li></ol>

# RENEW NC SMALL RENTAL REHABILITATION PROGRAM

## PROGRAM DETAILS

### Eligible Properties

- 1-4 units
- Landlord-owned properties in HUD and State MID areas
- Damaged or destroyed by Helene

### Award Range

\$250K - \$1.5M

### Requirements

Landlords must agree to provide affordable rent rates for a 10-year period for 80% or less AMI.

### Apply

- Online at [www.renewnc.org](http://www.renewnc.org)
- By phone at 1-888-791-0207
- Through the app



# Renew NC Small Rental Rehabilitation Program

## Qualifications

### Do You Qualify?

- Your property has 1–4 rental units and sustained unrepaired damage from Hurricane Helene (Sept. 27, 2024).
- The property is located in a HUD- or State-designated Most Impacted and Distressed (MID) county.
- Units are VACANT at the time of application (no evictions to qualify).
- You owned the property at the time of the storm and still own it (priority).
- You are current on property taxes or on an approved payment plan, and loan obligations, including mortgages, are current.
- You agree to lease assisted units to income-eligible households at restricted rents for 10 years.

For more information: [commercerecovery.nc.gov/smallrentalrehabilitationprogram](https://commercerecovery.nc.gov/smallrentalrehabilitationprogram)

# Renew NC Small Rental Rehabilitation Program Information Sessions

- This month, DCR is hosting two virtual information sessions to provide an overview of the program and answer questions from potential applicants.
- Wednesday, January 14 at 1:00 p.m. ET
- Wednesday, January 21 at 1:00 p.m. ET



For more information: [commercerecovery.nc.gov/smallrentalrehabilitationprogram](https://commercerecovery.nc.gov/smallrentalrehabilitationprogram)

# EDA Disaster Supplemental Grant Program - \$1.45B in Economic Recovery Funds

Funds open to all 2023 & 2024 federally-declared disaster zones

First come, first served – EDA encourages applicants to work with their local Economic Development representatives to submit competitive projects ASAP

80% EDA funded / 20% cost share from applicant

Eligible Entities include units of government, economic development districts, institutions of higher education, and nonprofits working with local government

GROW NC seeking to increase the # of proposals from NC

- Working directly with communities to develop projects and encourage timely applications
- Additional \$6M in State Helene aid for local government capacity to assist with EDA and other applications

Questions can be directed to: Hillary Sherman  
EDA NC Economic Development Representative  
828-707-2748 | hsherman@eda.gov

[eda.gov/strategic-initiatives/disaster-recovery/supplemental/2025](https://eda.gov/strategic-initiatives/disaster-recovery/supplemental/2025)

## Three Funding Pathways

- **READINESS PATH** – Capacity building and strategic planning projects that set the stage for future investment
  - Max award: \$500,000
  - No application deadline
- **IMPLEMENTATION PATH** – Standalone construction and non-construction projects that help communities recover from natural disasters and advance recovery and growth
  - Max award: \$20m
  - No application deadline
- **INDUSTRY TRANSFORMATION PATH** – Coalition-led, multi-project portfolios that transform regional economies through targeted industry development
  - Max award: \$50m
  - Application deadline: March 3, 2026

# GROW NC & State Resources to Support EDA Applicants

## Technical Assistance

- In partnership with the regional Councils of Governments, NC Association of County Commissioners, and NC League of Municipalities

## Return on Investment (ROI) & Impact Analyses

- Partnership with NCGrowth to provide ROI and Impact Analyses for eligible applicants
- Interested applicants can submit requests through an online form
- Jan 31: next and final deadline to request help with these analyses

## Additional EDA Information

We continue to encourage applicants to get applications in as soon as possible.

- No deadline for Pathways 1 & 2 but funds are first come, first served
- An EDA representative is meeting with local communities to offer assistance
- GROW NC is ready to help where we can – please let us know where we can be helpful

### EDA Point of Contact:

Hillary Sherman, EDA NC Economic Development  
Representative

828-707-2748 | hsherman@eda.gov

### GROW NC Point of Contact:

Desiree Kennedy, Program Officer  
919-819-7523 | desiree.kennedy@nc.gov





# Regional Recovery Coordination: Engagement Team Based in Western North Carolina

Scott Elliott, Deputy Director for Engagement, GROW NC



# **GROW NC Engagement Team**

## **Introductions and overview**

Our mission is to accelerate the recovery and improve the lives of all western North Carolinians as we:

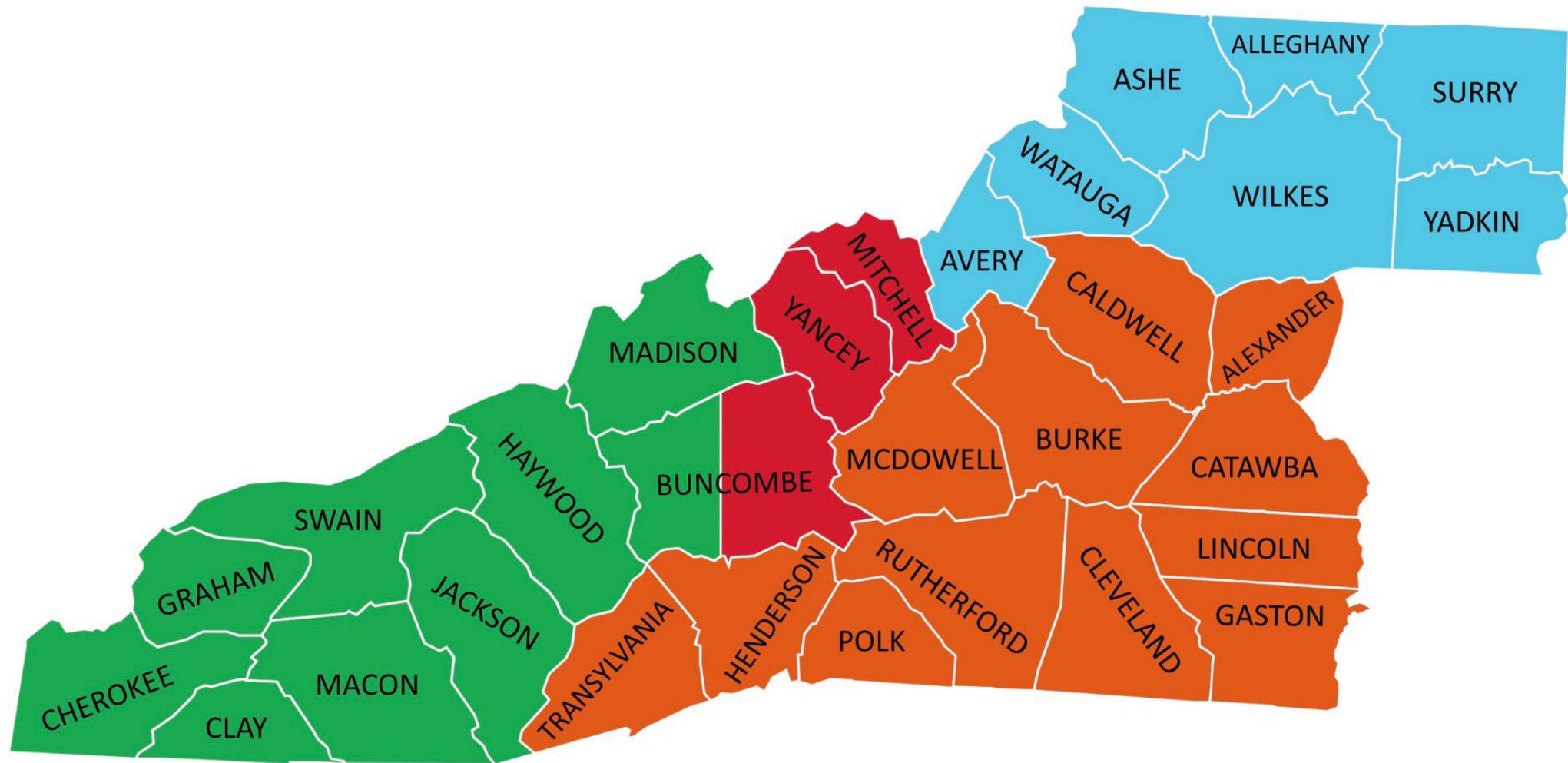
Communicate

Advocate

Solve problems

# New Regional Recovery Coordinators

## Strengthening Recovery Resources Across WNC



# Regional Recovery Coordinators

## Strengthening Recovery Resources Across WNC

BRITTANY DUNCAN

High Country COG (except Yancey and Mitchell) \*\*

MILLIE SMITH \*\*

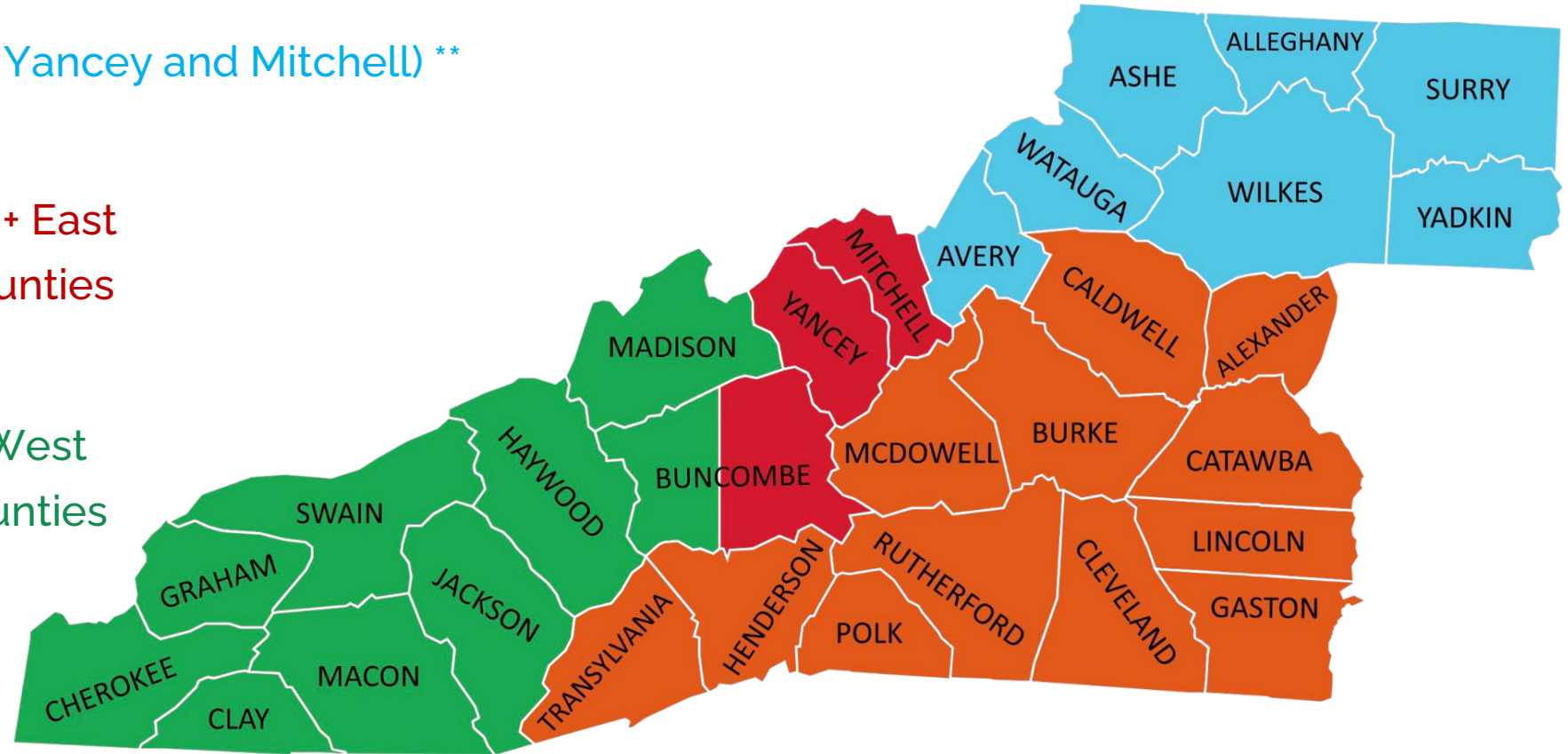
- Buncombe: Swannanoa + East
- Yancey and Mitchell Counties

DREW CHRISTY

- Buncombe: Asheville + West
- Haywood + Madison Counties
- Southwest Commission

STEVE GARRISON

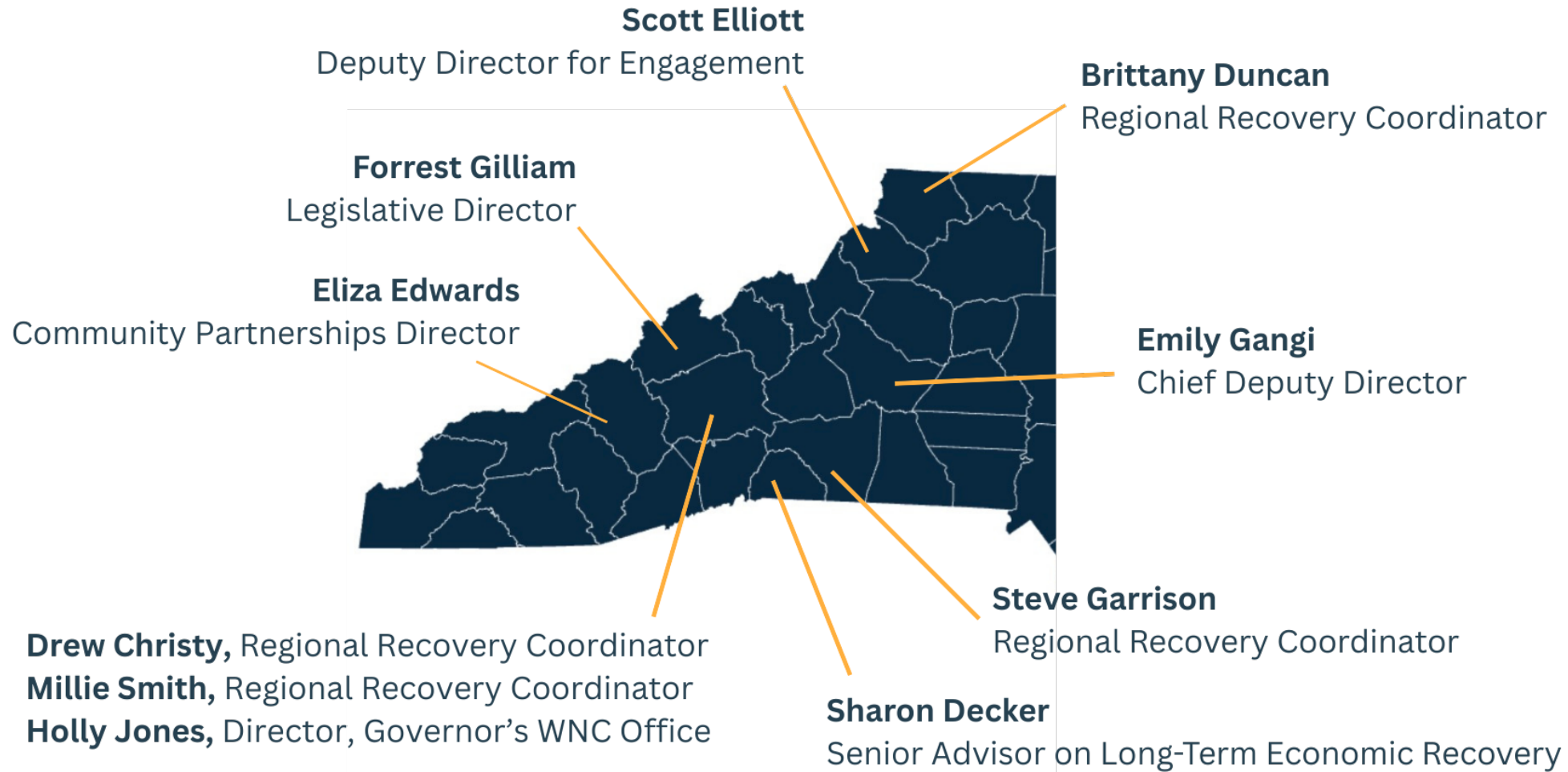
- Foothills COG
- Western Piedmont COG
- Henderson + Transylvania Counties



\*\* With additional coordination responsibilities



# GROW NC Engagement Team



# Regional Recovery Coordinators: Essential Duties and Responsibilities



## Recovery services and advocacy:

- First point of contact for all recovery-related inquiries from residents in the assigned region, including individuals, businesses, non-profits, and local governments
- Proactively discover and resolve resident needs related to the recovery



## Resource navigation:

Guide residents and stakeholders through the process of accessing available recovery resources and assistance programs from federal, state, and local sources



## Interagency coordination:

Work collaboratively with non-governmental agencies and governmental partners to ensure a cohesive, robust, and comprehensive recovery effort throughout the region



## Public engagement and outreach:

Attend and participate in public meetings and community events to inform residents about recovery updates and available resources



**Please let us know how we can collaborate  
with you and assist our neighbors.**

Website: [WNCrecovery.nc.gov](https://WNCrecovery.nc.gov)

Email: [wncrecovery@nc.gov](mailto:wncrecovery@nc.gov)



# Progress on Landslide Mapping and Early Warning System Development

David Korte, Landslide Hazards Program Manager, NC  
Department of Environmental Quality





# Landslide Hazards Program

## Primary Tasks:

- Landslide Inventory
- Landslide Susceptibility
- Landslide Resiliency

## Established SL 2005-1 – Terminated 2011:

- Macon, Buncombe, Henderson, Watauga

## Reestablished SL 2018-5     \$3.6M allocated, \$440K remaining

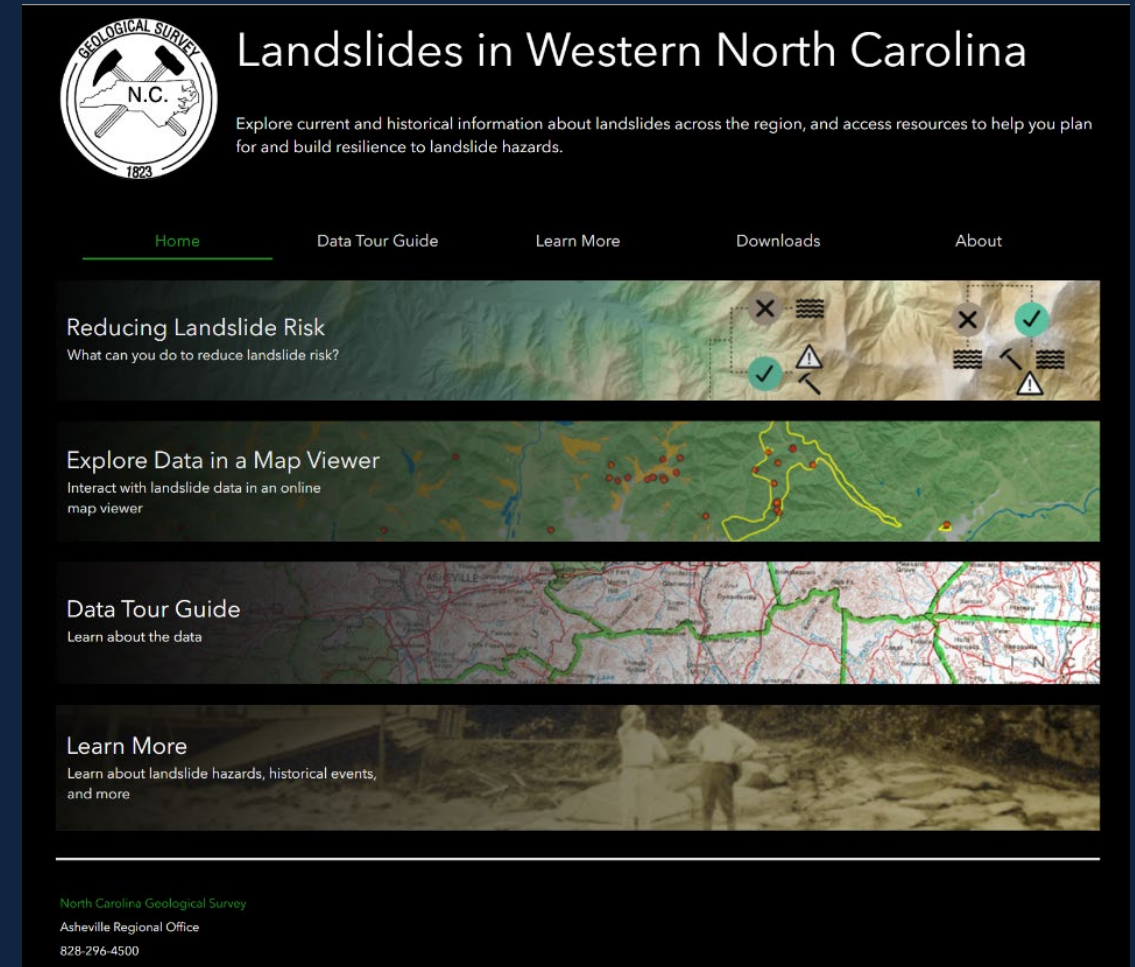
- Pre-Helene: Polk, Rutherford, Cleveland, Transylvania, McDowell

## 2024 USGS LHRR Grant \$122,500

- Haywood County – Inventory, Susceptibility, EM and Public Relations     Ends 9/2026

## 6/2025 HB1012 \$3M Appropriation

- \$840,000 Obligated
- \$1.75M Budgeted for Soil Moisture Network



<https://landslidesncgs.org>



# Landslide Hazards Program Update

## ➤ Goals

- Accelerate landslide inventory mapping, susceptibility mapping, and landslide risk assessment
- Establish community awareness and build resiliency through public outreach
- Improve coordination between agencies in preparing for landslide events
- Position NC at forefront of hazard and resiliency mapping through innovative techniques development

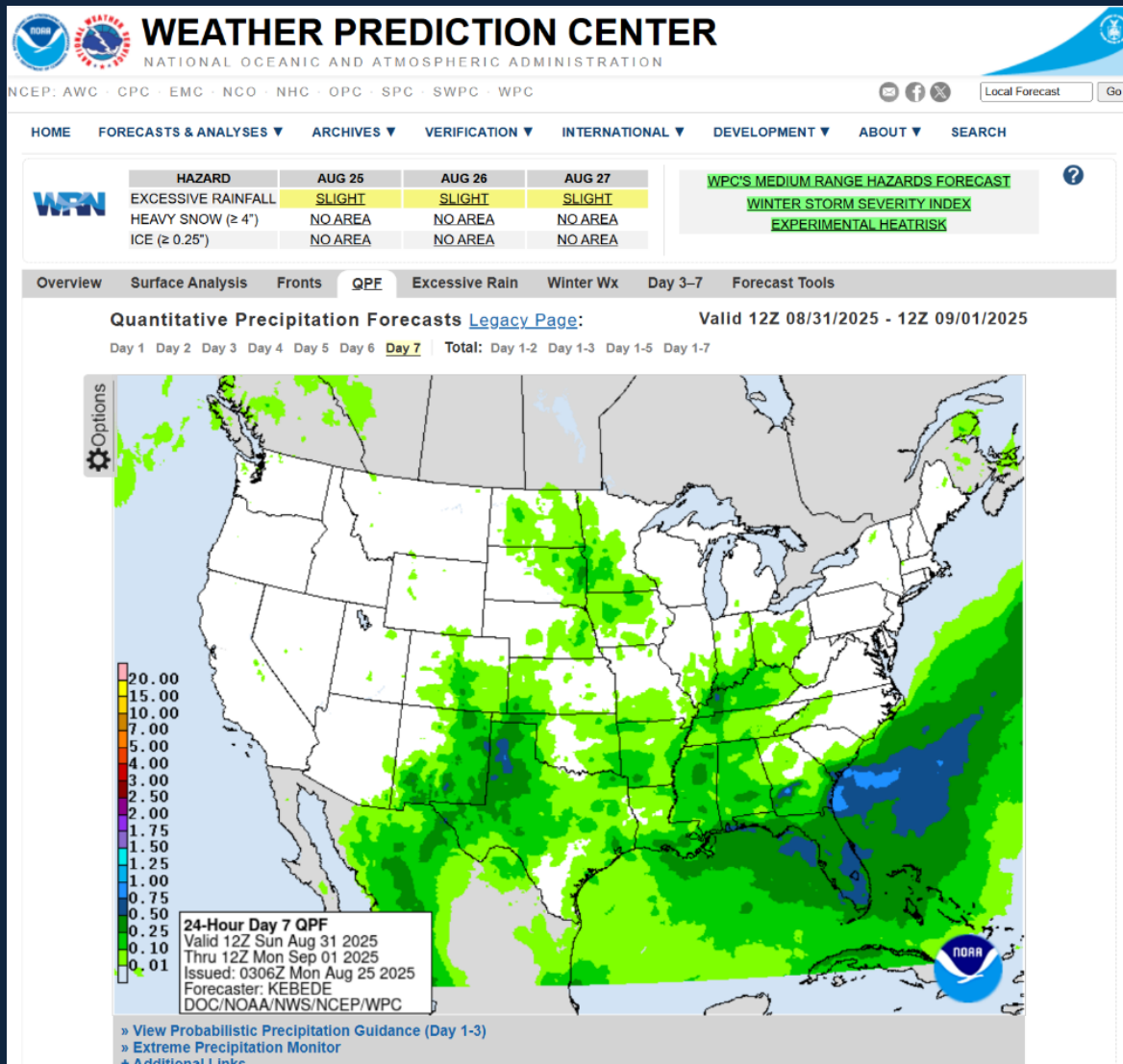
## ➤ Impacts

- State/local emergency managers – prevent loss of life
- Local planning departments – community safety, smart growth management, resilient development
- Public awareness, resilience, health, and safety in the mountain region

# Helene Landslides - Preliminary Statistics

Type		Damage	
Debris Slide/Debris Flow	2,062	No Impact	1,049
Slide	404	Road	918
Coalescing Flow	258	River/Stream	516
Flow Slide	103	Structures	174
Other	8	Road & Structure	161
		Utilities	16
Responses		Fatalities	31
469			

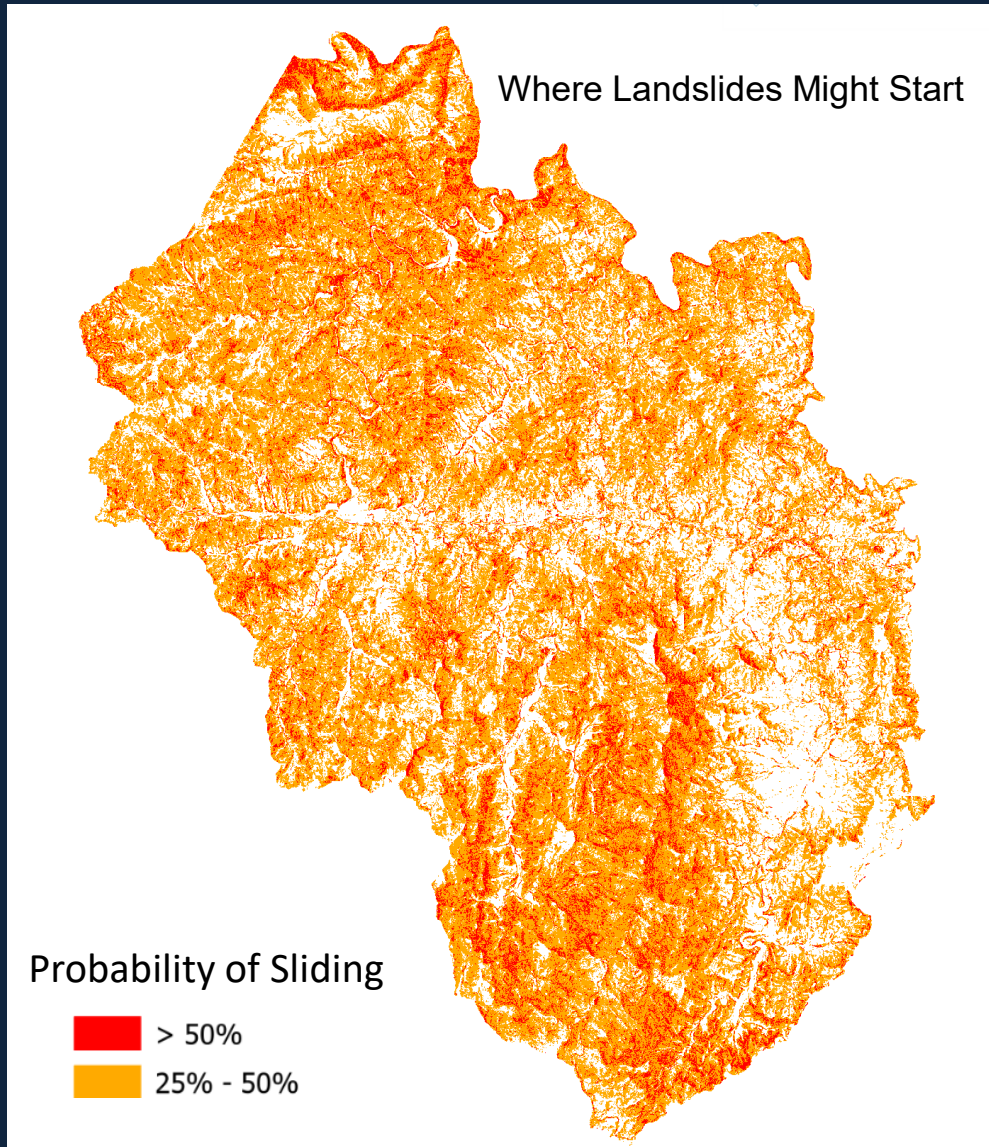
# Rainfall Thresholds for Landslide Activity in WNC



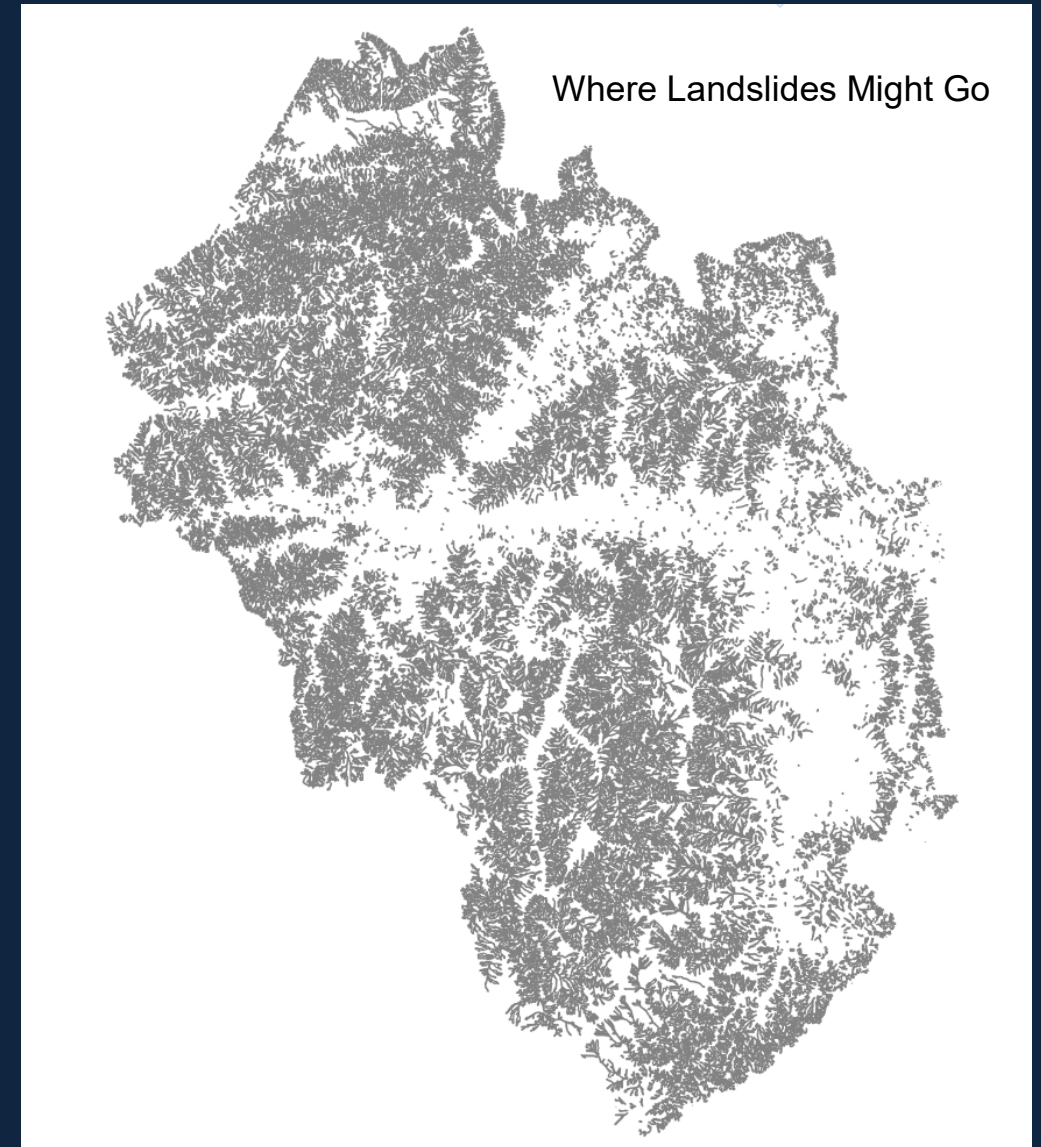
- **≥3 inches / 24 hours:**  
Landslides on some constructed slopes with high antecedent moisture
- **≥5 inches / 24 hours:**  
Scattered landslides on constructed and non-constructed slopes
- **≥10 inches / 24 hours:**  
Widespread landslides on constructed and non-constructed slopes



## Shallow Debris Slide & Debris Flow Probability of Sliding

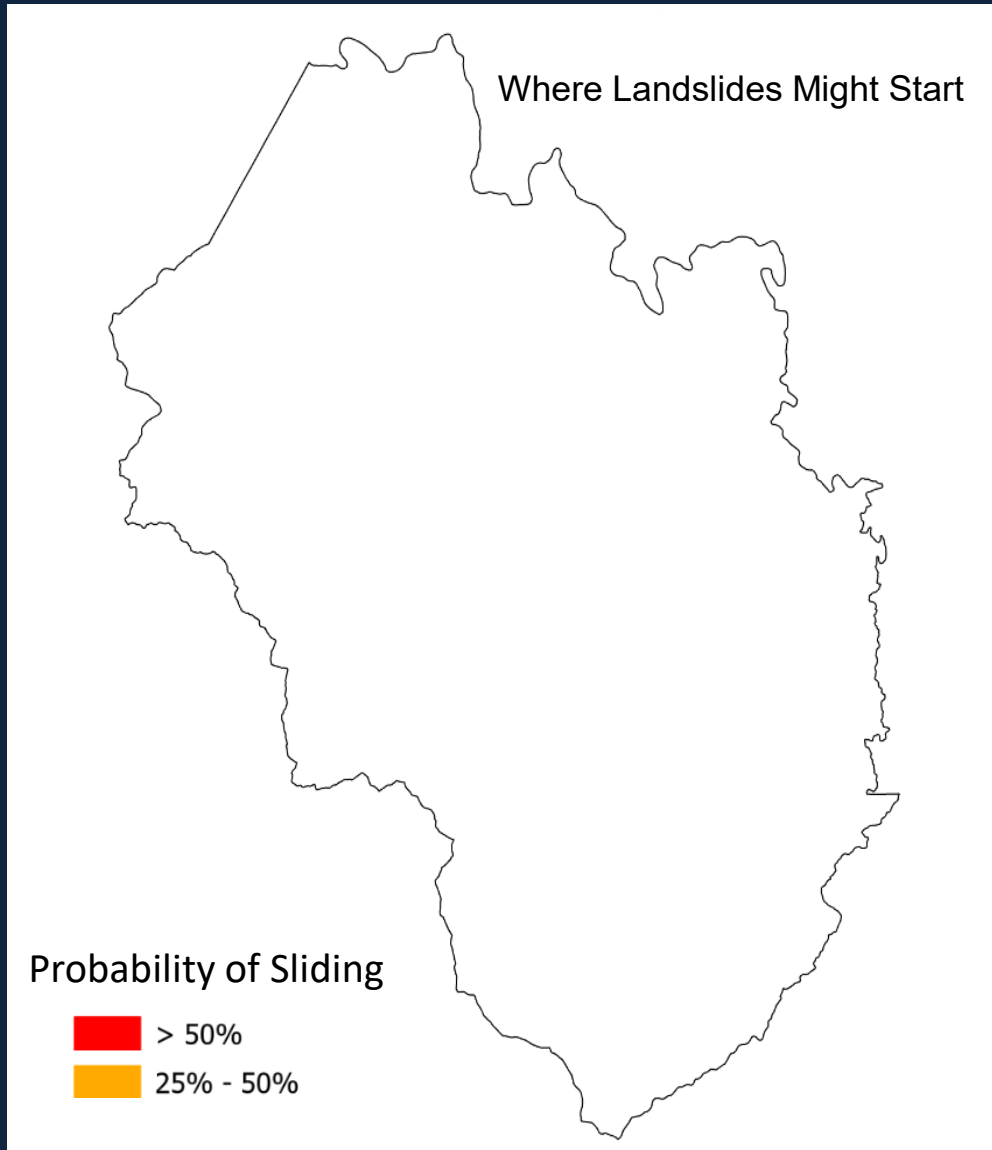


## Potential Channelized Debris Flow Pathways

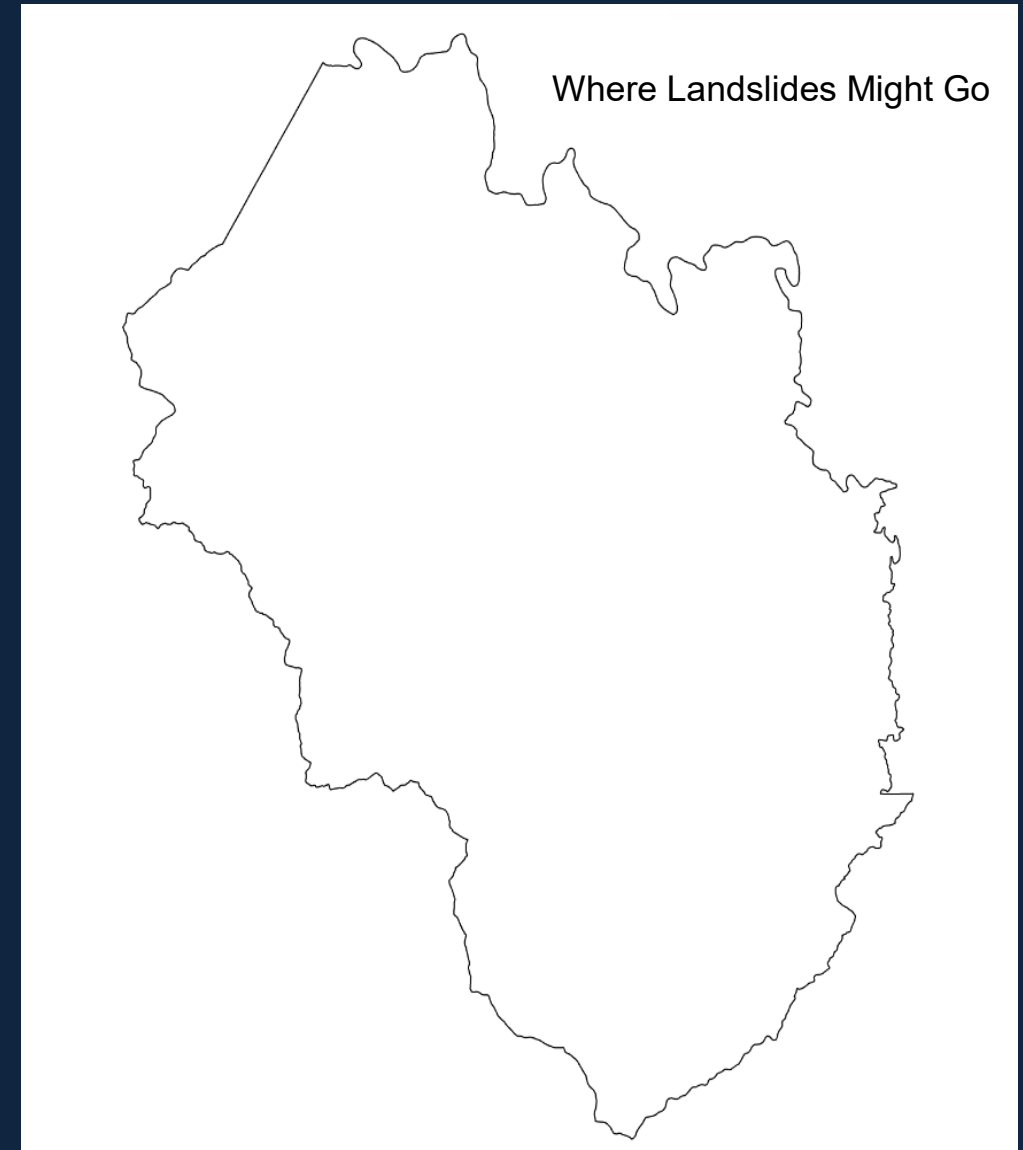


≥5 inches / 24 hours

## Shallow Debris Slide & Debris Flow Probability of Sliding



## Potential Channelized Debris Flow Pathways



Now

# WNC Landslide Early Warning System

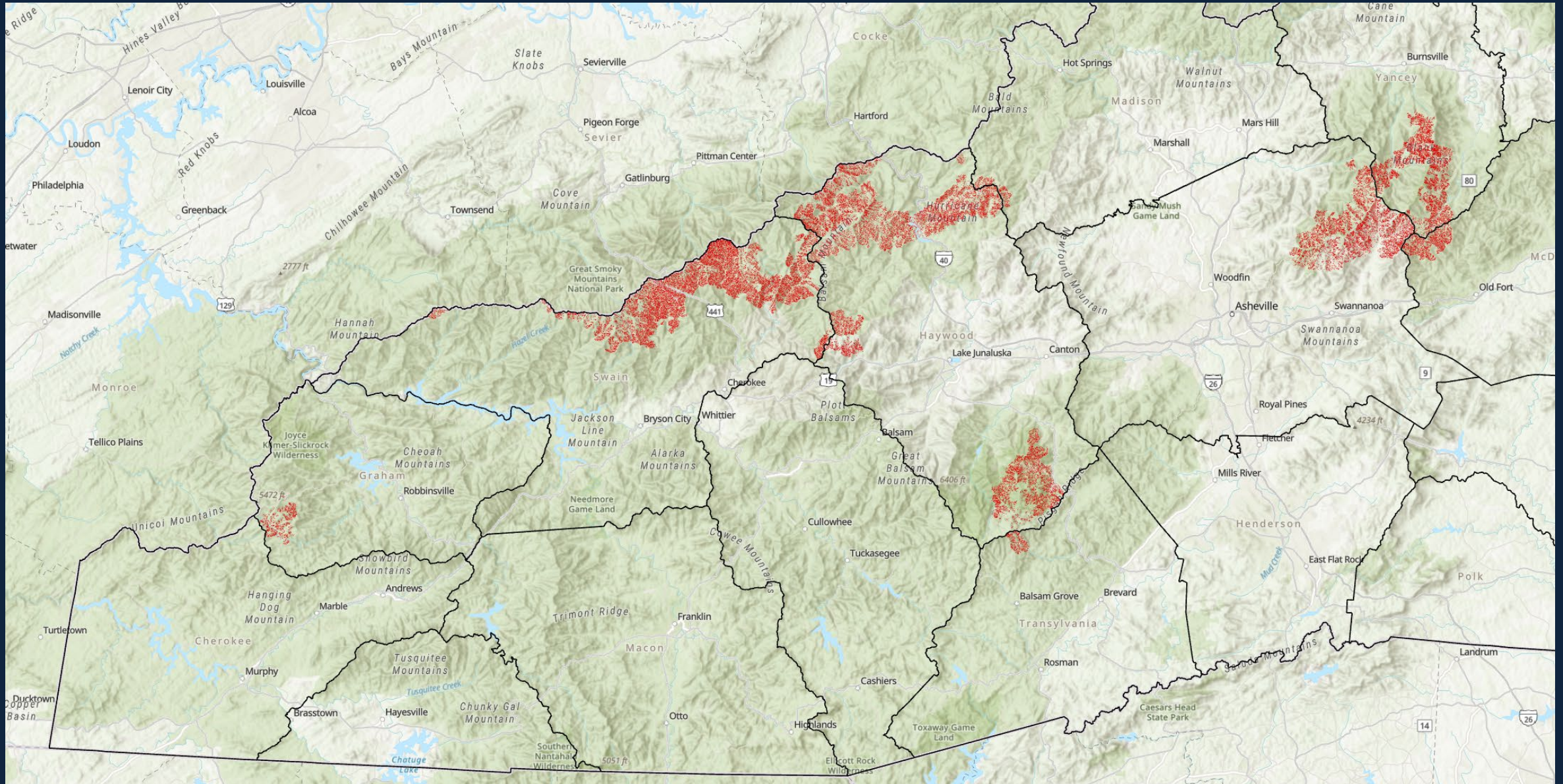
- Add landslide initiation rainfall threshold to susceptibility maps
  - Dynamic and time relative susceptibility maps with precipitation forecast and antecedent soil moisture

## Timeline

- Version 1 with dynamic susceptibility maps completed in 1 year
  - Automated alerts in year 2 or sooner
- Version 2 Antecedent soil moisture network in years 1 – 3 if personnel funding approved
- Incorporate the best science and technology into the system through partnering with USGS, NWS, NSF, higher education, etc.
  - ✓ Increased public trust in threat communication by reducing false positives



# Landslide Susceptibility with Rainfall Thresholds – Concept Map





# Landslide Hazards Program Update

## ➤ Actions

1. WNC susceptibility models completed within 2 years, landslide inventory mapping continues as long as we have slopes, storms and gravity
2. Annual recurring training on how to use landslide inventory and susceptibility maps for WNC County Planning, Development, Public Relations, and Safety departments
  - During Helene: Some entities did not know how to use existing landslide hazard maps
  - Hazards to critical infrastructure: schools, hospitals, power, water ...
  - Placement of new critical infrastructure
3. WNC Structural (buildings) landslide vulnerability and risk assessment completed within 2 years - Additional personnel funding included in request
  - Dynamically determine landslide risk to critical infrastructure during storm events

# Landslide Hazards Program Update

## ➤ Current Staff

- 3 Landslide Mappers
- 1 Geospatial and Digital Data Specialist

## ➤ Personnel Needs

- 3 Permanent Monitoring Station Installers and Maintainers
- 1 Researcher focused on landslide risk and resiliency in western North Carolina
- 1 Modeler/Cartographer to create susceptibility models and portray them to the public
- 1 Supervisor for Researcher and Landslide Mappers

## ➤ Financial Needs

- \$1,335,000 Recurring for personnel and overhead
- \$494,000 Non-recurring for vehicles, computing resources, personnel equipment (boots, gloves, safety vests, coats, raingear, first aid kits, etc.)

**Total needed: \$1,830,000**

# Landslide Hazards Program Update

## ➤ Resiliency

- ❖ Emergency Management/Services focuses resources and notices to high susceptibility areas that include required precipitation.
  - Increase map comprehension
  - Reduce response time
  - ✓ Increased public trust in advisories by reducing false positives
- ❖ Counties/Municipalities can, as the weather situation changes, dynamically:
  - Safeguard critical infrastructure
  - Issue evacuation/recall notices
  - Establish escape/recall routes



# North Carolina Geological Survey - Landslide Hazards Program

Landslide Inventory

Landslide Susceptibility

Landslide Resiliency

Thank you!

Questions?

<https://landslidesncgs.org>

<https://resilienceexchange.nc.gov>







# Hazard Mitigation Grant Program: Process for Homeowner Acquisitions, Elevations, and Infrastructure Project Applications

Will Ray, Director, Division of Emergency Management, NC  
Department of Public Safety







## Helene HMGP Timeline

- 11 December 2024: Notice of Funding Availability Published
  - Application teams began accepting homeowner applications in Disaster Recovery Centers and online
- 30 May 2025: Infrastructure Construction Letters of Interest (LOI) due
- 6 October 2025: Infrastructure Request for Information (RFI) due
- 31 October 2025:
  - Homeowner LOI due
  - Advanced Assistance application deadline
- 27 December 2025: Initial FEMA HMGP Applications due
  - Deadline extended for State Applications until 27 April 2026



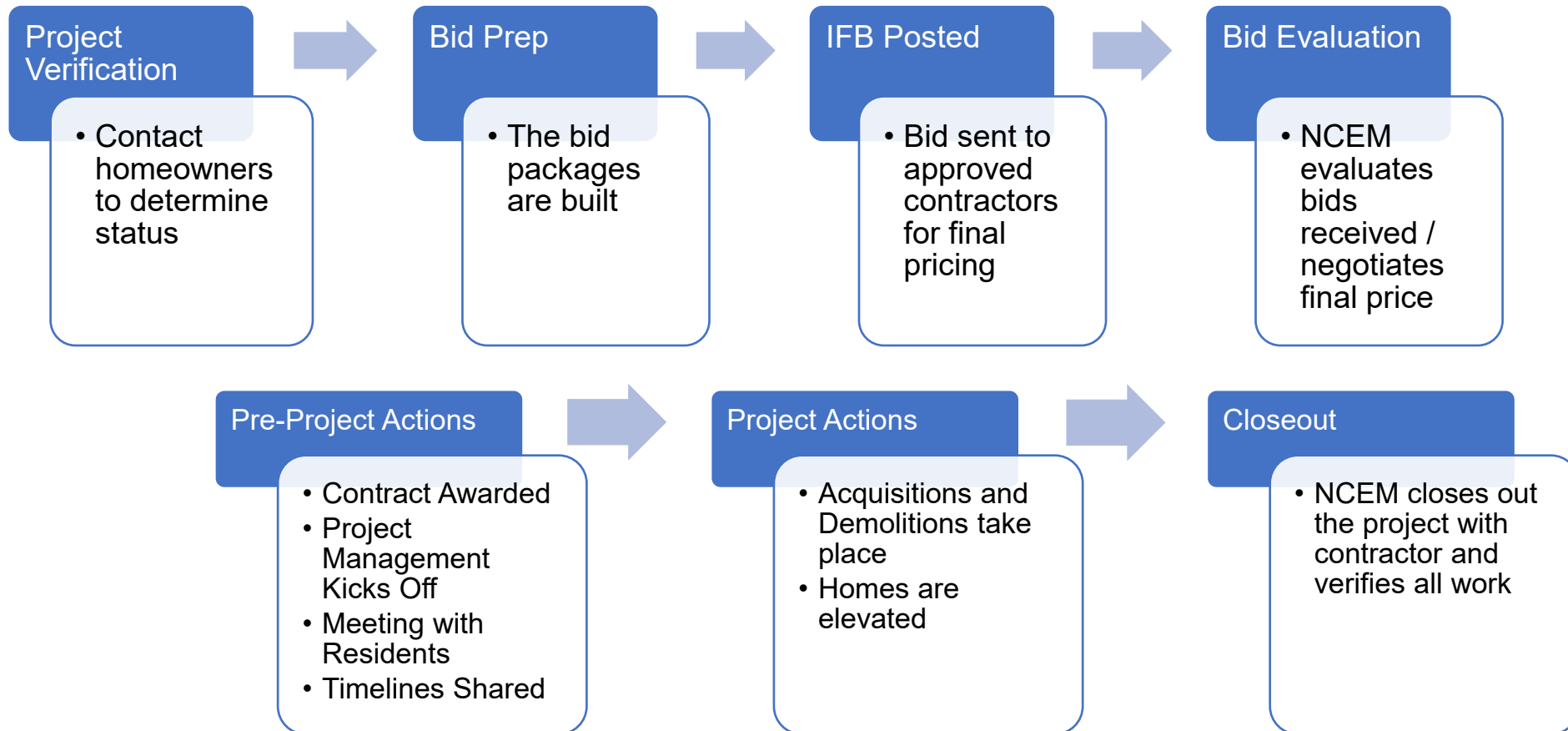


# Current Residential Application Status

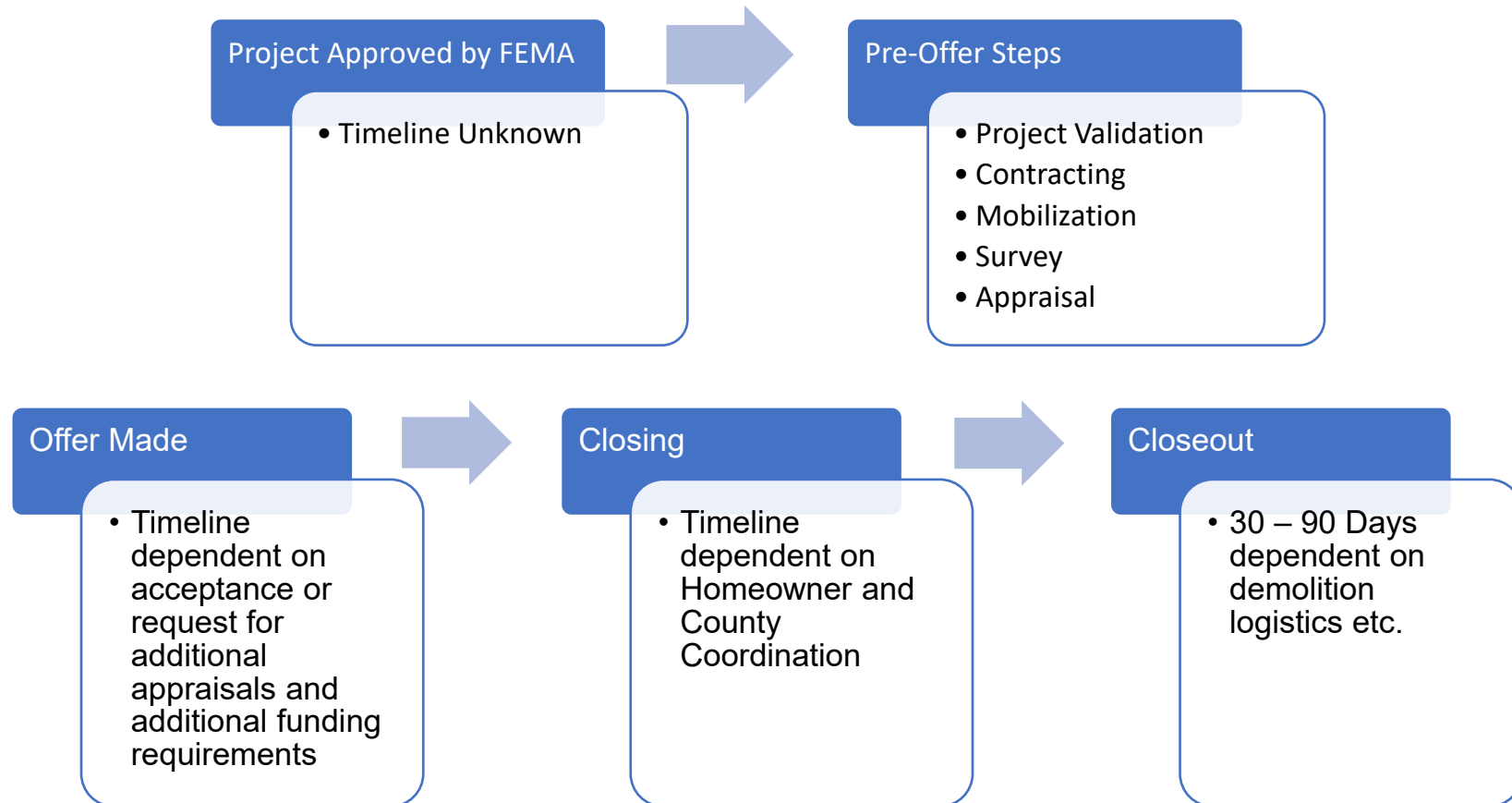
- **Home Acquisitions: Total submitted to State 806**
  - In Development - 7 Projects for 245 Homes
  - Submitted to FEMA - 19 Projects for 561 Homes
  - Approved by FEMA – 0 Projects
- **Home Elevations: Total submitted to State 666**
  - Projects In Engineering - 572 Homes in Engineer evaluation and 35% design
  - Projects in Development – 2 Projects for 94 Homes
  - Projects Submitted to FEMA – 0 Projects for 0 Homes
  - Projects Approved - 0 Projects
- Application Status Website
  - <https://www.ncdps.gov/helene-hazard-mitigation-application-submissions>



## Project Implementation Process (After Award)



# Acquisition Timeline Expectations





## HMGP Next Steps

- Continue to work with FEMA to approve pending applications
- Continue engineering evaluation of elevations for application compilation
- Continue working with communities to build infrastructure project applications
- Notify homeowners as soon as their project is either added to a submitted application or their application is approved by FEMA





# Remarks

## Governor Josh Stein





# Wrap Up and Next Steps

Matt Calabria, GROW NC

Next meeting: Monday, February 9, 10 a.m. to 12 p.m.  
Virtual



# Stay Connected

GROW NC is sharing recovery news, resources, progress metrics, and more.



STAY CONNECTED



[wncrecovery.nc.gov](https://wncrecovery.nc.gov)



[wncrecovery@nc.gov](mailto:wncrecovery@nc.gov)



[bit.ly/GROW-NC-news](https://bit.ly/GROW-NC-news)



[@wncrecovery](https://twitter.com/wncrecovery)