



Governor's Advisory Committee on Western North Carolina Recovery

May 22, 2026

10:00 am – 12:00 pm

Today's Agenda

Call to Order, Introductory Remarks | *Mayor Esther Manheimer, Co-Chair*

Welcome | *Dr. John Gossett, President, A-B Tech Community College*

The Critical Role and Importance of Long-Term Recovery Groups /
Eliza Edwards, Community Partnerships Director, GROW NC;
Chris Sigmon, Executive Director, Yancey Long-Term Recovery Group

Remarks / *Governor Josh Stein*

Wildfire Mitigation Efforts Across WNC |
Jason Guidry, Division Director, Forest Protection, NC Forest Service;
James Melonas, Forest Supervisor, US Forest Service (USFS);
Cavan Fitzsimmons, Deputy Forest Supervisor, USFS;
Melissa Patton, Executive Director, Carolina Land & Lakes RC&D

Resources for Resilience: WNC Resiliency & Recovery Project |
Ann DuPre Rogers, Executive Director, Resources for Resilience

Recovery Updates / *Matt Calabria, GROW NC*
Next Steps / *Matt Calabria, GROW NC*

Adjourn





Welcome

Dr. John Gossett, President, Asheville-Buncombe
Technical Community College





The Critical Role and Importance of Long-Term Recovery Groups

Eliza Edwards, GROW NC

Chris Sigmon, Yancey Long-Term Recovery Group

The Purpose and Role of Long-Term Recovery Groups (LTRG)

- An LTRG is a community-led, coordinating body of partner organizations from across sectors (nonprofit, faith-based, government, business, philanthropy, etc.) whose shared goal is to assist survivors through their recovery over the life of a disaster.
- LTRGs are critical leaders and drivers of recovery in their communities, especially as outside organizations move on following a disaster. Their functions may include
 - Case management
 - Volunteer recruitment and coordination
 - Construction programming
 - Information sharing
 - Fundraising, grant administration, resource pooling
- Funded through philanthropy and private donations.



LTRG Operational Structure

- “If you’ve seen one LTRG, you’ve seen one LTRG”
- Hold community meeting to understand needs and interested partners. From there, can be highly structured or more informal.
 - Develop steering committee, mission statement, bylaws, policies and procedures, etc.
 - Committees: unmet needs, construction, volunteer management, donations, spiritual support, communications.
- Fiscal sponsor to receive and/or apply for funding (some LTRGs will seek 501c3 designation)
- Have part- and/or full-time staff + volunteers; work very closely with partner organizations.



Status of LTRG across Western North Carolina

- 19 LTRGs in development or operational, covering 20 counties
- Many still doing outreach and intake for new cases.
- Hosting unmet needs roundtables with partners to help meet survivors' needs and advance them through their recovery plans.
- Coordination with American Red Cross, FEMA Voluntary Agency Liaisons, Renew NC, state Disaster Case Managers, and dozens of other organizations (local, regional, national).
- Anticipated challenges with operational sustainability beyond years 2-3 of a disaster.





Remarks

Governor Josh Stein





Wildfire Mitigation Efforts Across WNC

Jason Guidry, NC Forest Service

James Melonas & Cavan Fitzsimmons, US Forest Service

Melissa Patton, Executive Director, Carolina Land & Lakes RC&D



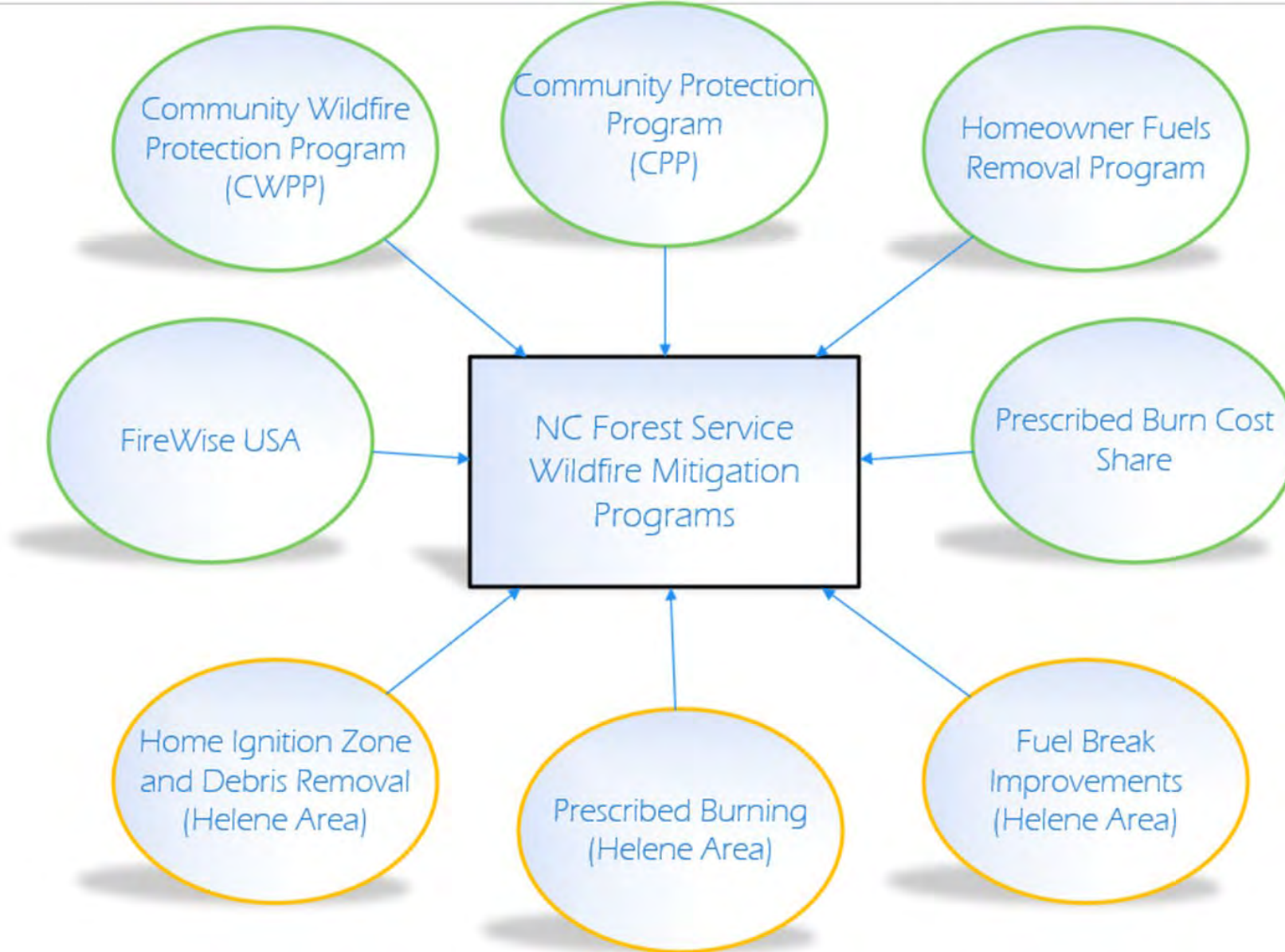
Helene Recovery: Wildfire Mitigation Programs

Jason Guidry- Assistant State Forester for Forest Protection
Kevin Harvell- Deputy State Forester

The N.C. Forest Service is a division of the N.C. Depart. of Agriculture & Consumer Services
Steve Troxler, Commissioner



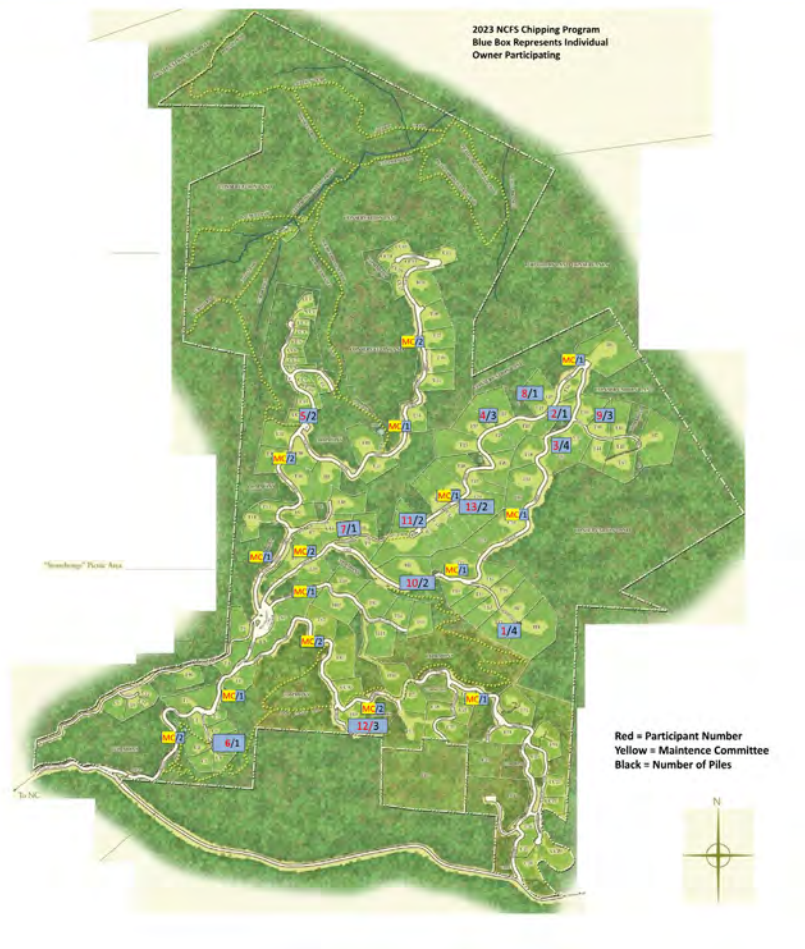




Homeowners' Fuel Removal

CRESTON

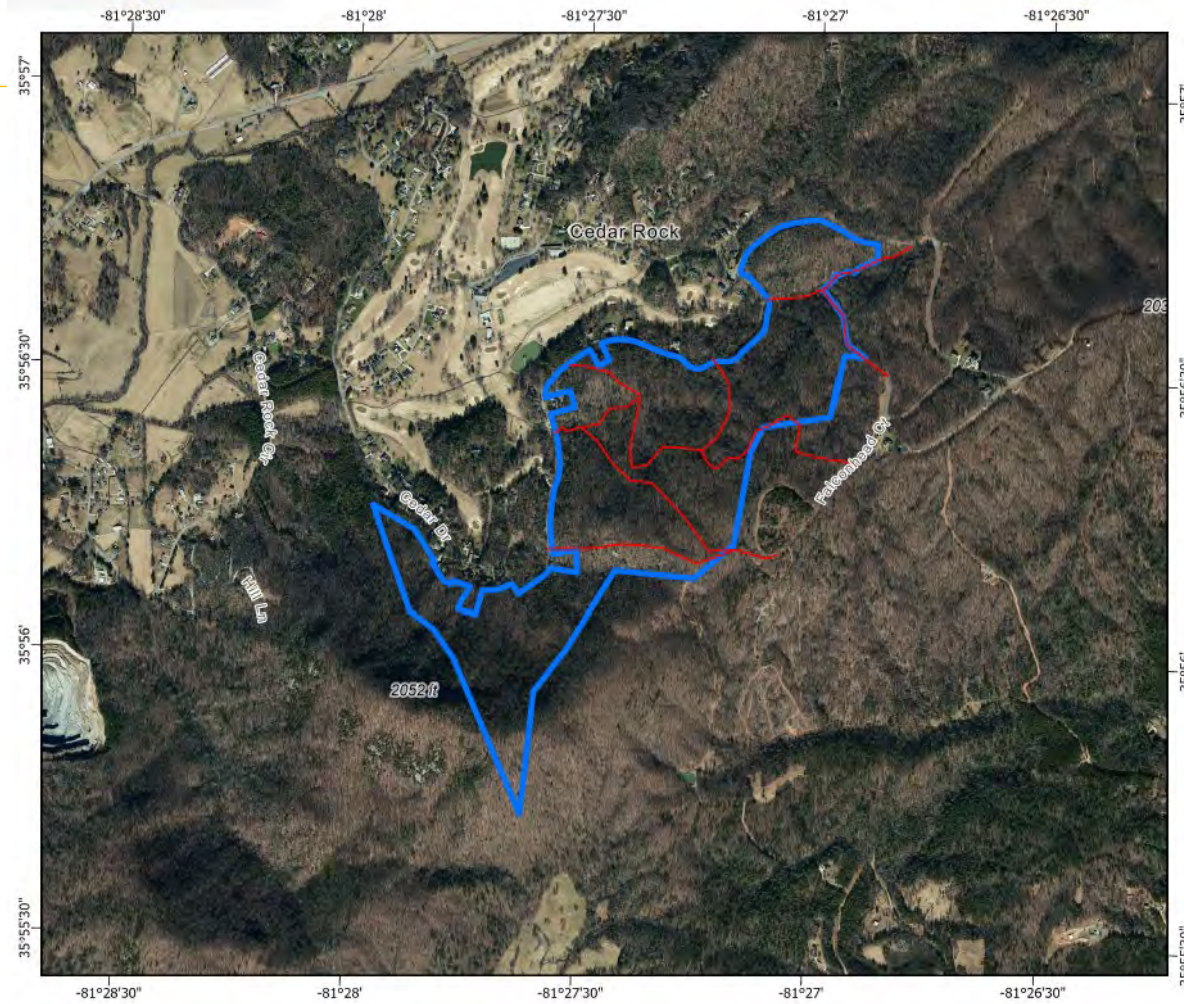
Black Mountain, North Carolina



Community Protection Plan (CPP)



North Carolina Forest Service
Cedar Rock CPP Map





Helene Recovery: Disaster Mitigation Program

The N.C. Forest Service is a division of the N.C. Depart. of Agriculture & Consumer Services
Steve Troxler, Commissioner



Program Objectives



- Reduce wildfire hazards presented by natural vegetation and storm debris.
- Improve access for firefighters for suppression activities.
- Increase viable firelines for wildfire suppression tactics.



Mitigation practices:

HIZ improvement, prescribed burning and fuel break enhancement



Program Outline



- No cost to landowners via a \$0 contract with the NCFS
- Focus on private property with public ownerships remaining eligible
- Total funding: \$5,150,000 through June of 2030



Program Outline



Priority Projects:

1. Proximity of dwellings and infrastructure to storm-related fuel complexes.
2. Related to storm-damage classes: catastrophic, severe, or moderate.
3. Proximity to an “Area of Concern” identified in community wildfire protection plans or other planning product approved by the NCFS.



Program Outline

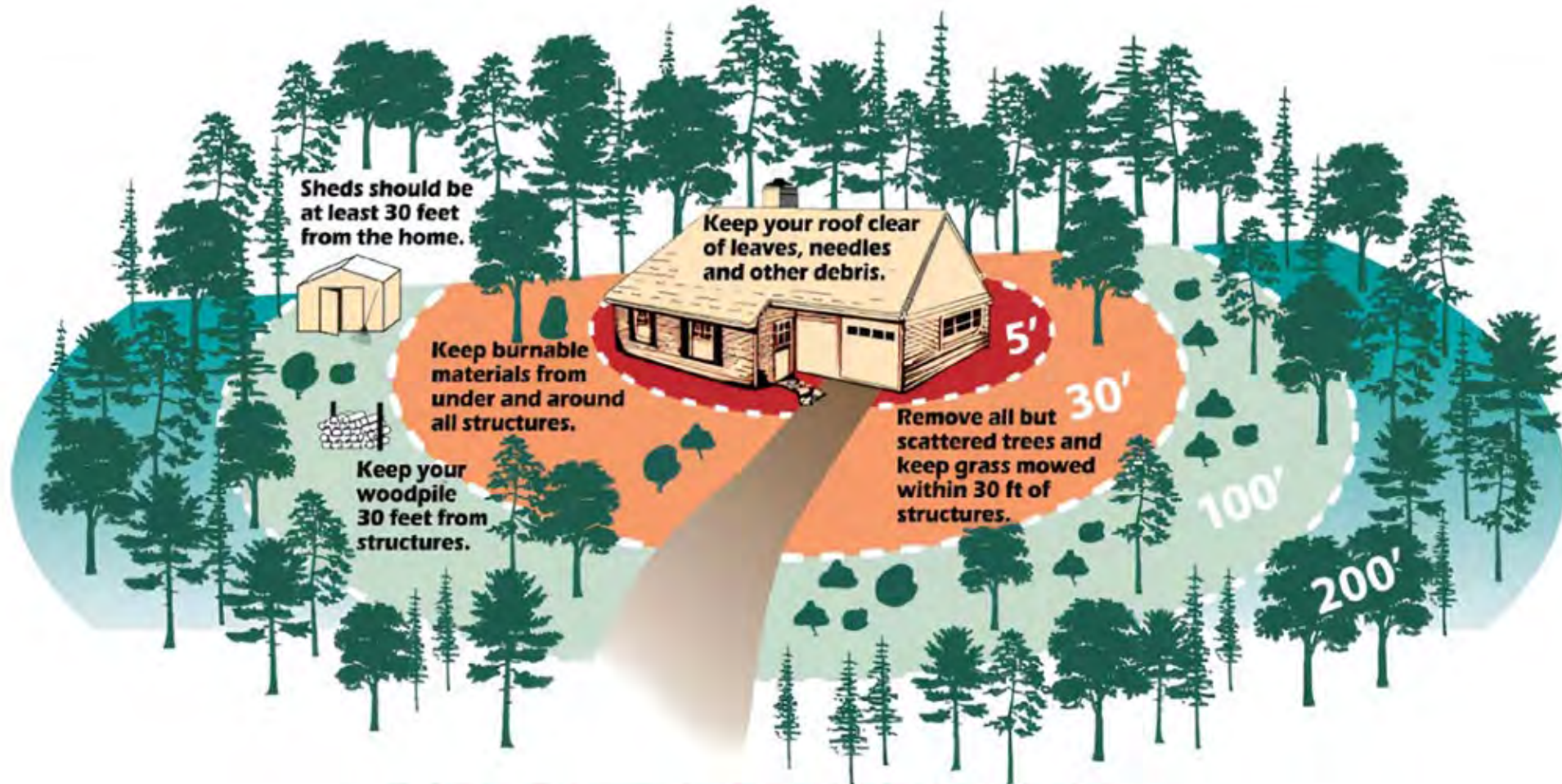


Program Rollout:

- Currently developing pilot projects in Buncombe and Macon Counties
- Media release for the program scheduled for June 1, 2026



Protecting Property: the HIZ



The Home Ignition Zone



Protecting Property: the HIZ



Protecting Property: the HIZ

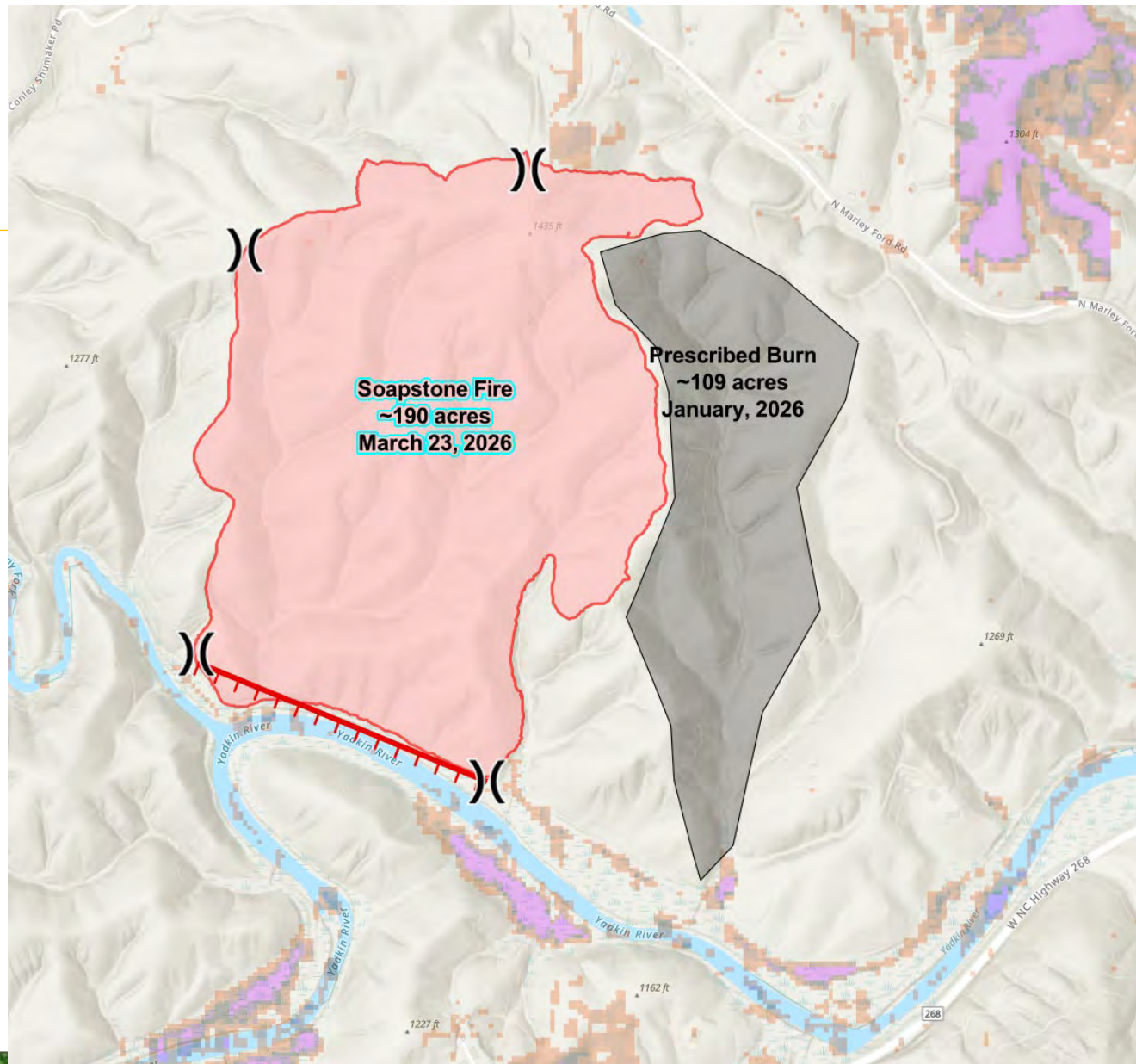


Prescribed Burning



Prescribed Burning





Improving Access and Firelines



Improving Access and Firelines



Improving Access and Firelines







More

New

1T0335PAPTF25240
 1T0335PAPTF25240
 34 minutes ago

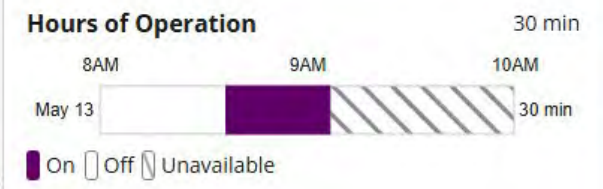
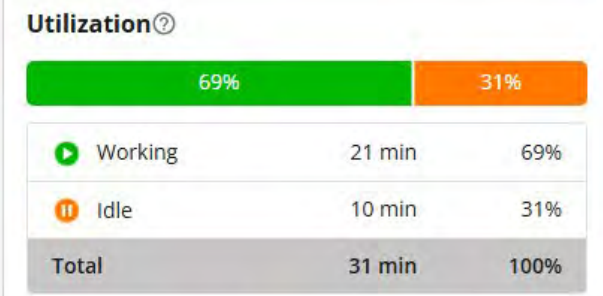
23 45% 25%

Manage Tags

Directions Share/Export

Summary Alerts Maintenance Setup

May 13, 2026



Fuel Performance

Work State	Totals	Rates
------------	--------	-------

Location History
 May 13 - 12:00 AM

May 13 - 11:59 PM

Eller Co

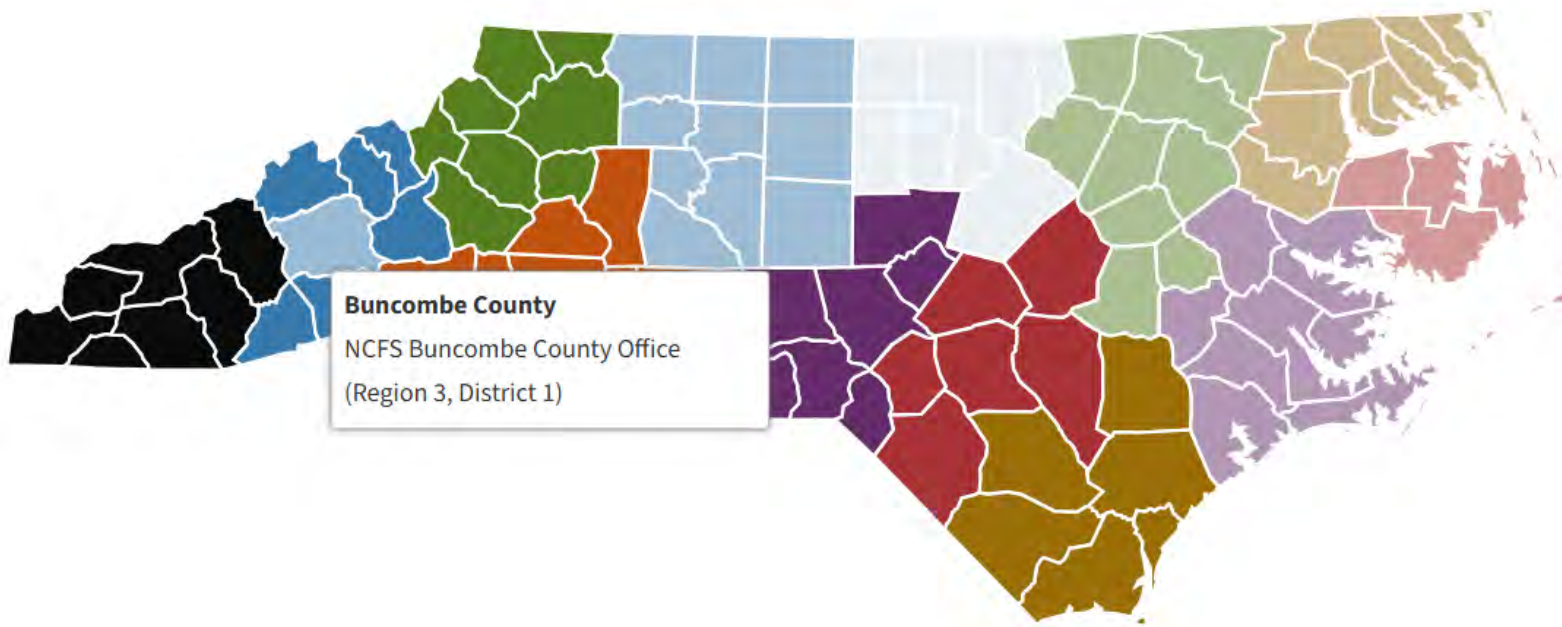




N.C. Forest Service - Contacts

County Offices

Your N.C. Forest Service county ranger is the key contact for programs and services we offer in your county. Would you like to have a forest management plan prepared for your property? Want to know if your timber is ready to harvest? Have a forest insect or disease problem? Want to know more about the Forest Stewardship Program or just want to know more about forestry in your county? Contact your county ranger to get started. Simply select your county from the list below.





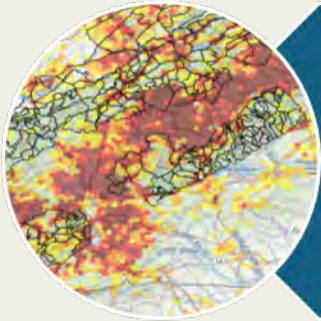
Forest Service
U.S. DEPARTMENT OF AGRICULTURE

National Forests in North Carolina: Post-Helene Wildfire Risks and Response

James Melonas

Forest Supervisor

May 19, 2026



Rapid Risk Assessments



Increased Wildfire Preparedness and Response



Hazardous Fuels Mitigation

All in Close
Coordination
with NC Forest
Service,
Federal, State,
Tribal, and
Local Partners

Wildfire Rapid Risk Assessment



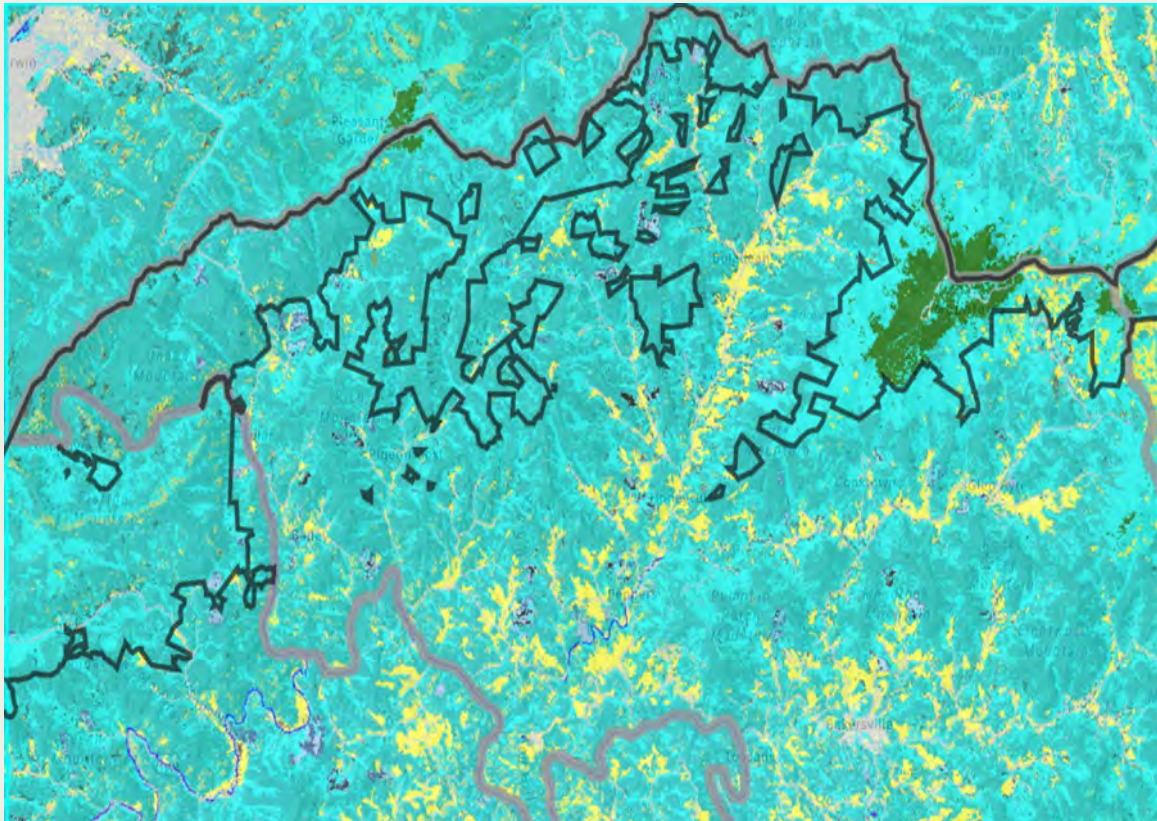
Completed a Rapid Risk Assessment to determine locations that were at greatest risk of wildfires due to post Helene fuel loading

- Analyzed satellite imagery to determine the location and extent of timber/fuels damage
- Identified communities, infrastructure, watersheds, and natural resources with an increased risk of wildfire due to the changed fuel conditions
- Identified locations for critical prescribed burn and mechanical hazardous fuels reduction projects
- Identified critical roadways impacted by Helene damage

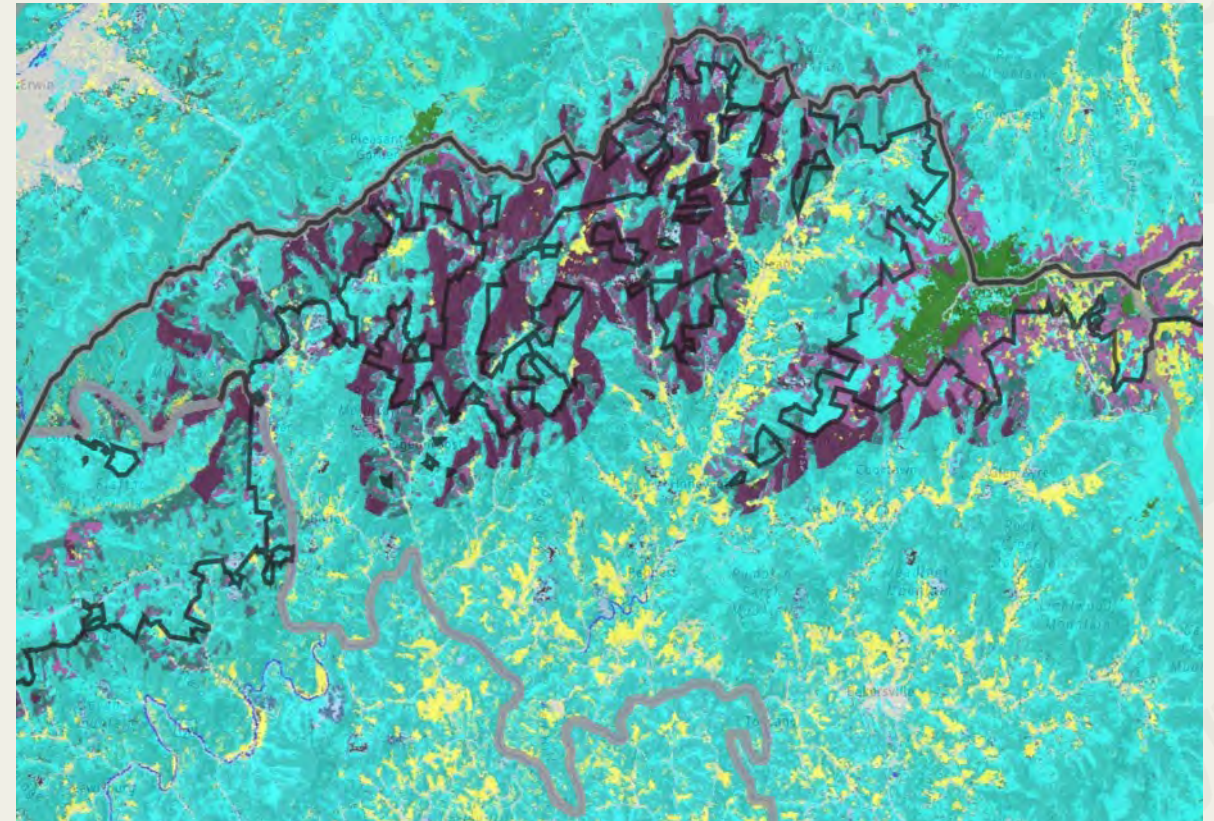
Fuels Model Changes Post-Helene

Darker colors indicate storm damage and wildfire suppression challenges.

Pre-Helene Conditions
Mitchell County



Post-Helene Condition
Mitchell County



Potential Operational Delineations (PODs) Analysis



The Forest Service collaborated with partners and cooperators to identify fire suppression POD locations within and adjacent to National Forest System lands.

- Used a risk-based approach to identify wildfire containment points that provide the highest probability of success while minimizing the impacts to values at risk.
- Pre-identified locations where fire containment lines would be most successful in the event of a wildfire.
- Identified key roads and access points which expedite access/egress for first responders.

Incident Strategic Alignment Process (ISAP)

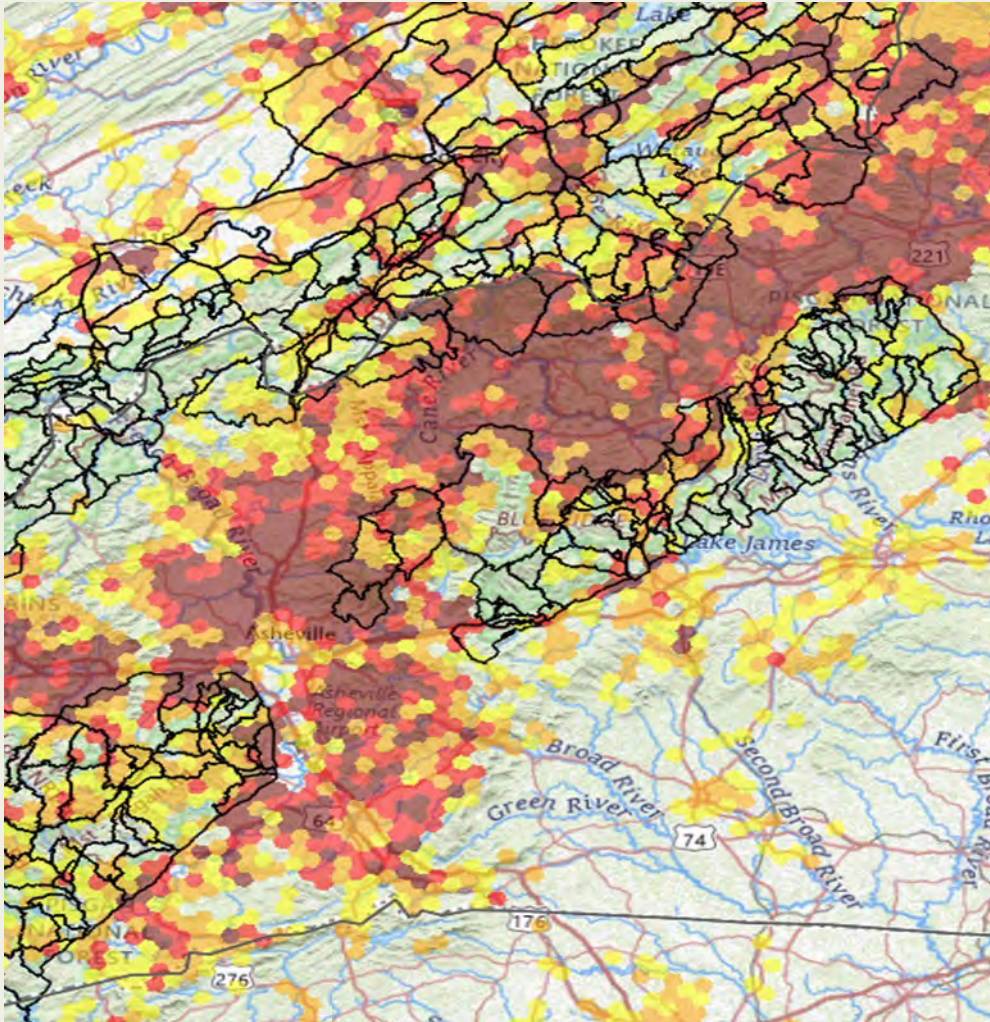
The Forest Service completed an ISAP analysis to identify critical values at risk and formulated strategic actions to address those risks.

Examples include:

- I-40 restoration and reopening
- Wildfire threats
- Flood and debris threats
- Local economy
- Public access
- Local economy and culture
- Forest health, structure and composition
- Watershed health



Risk Management Assistance Dashboard (RMA)



Data from the Wildfire Risk Assessment and PODs data is published on the RMA dashboard and include the following analytics:

- Total POD acreage
- Suppression Difficulty Index
- Population
- Housing units
- Communication devices
- Major roads (miles)

Wildfire Suppression Strategies

The NC Forest Service and USFS collaborated to develop a new Fire Danger Operating Plan (FDOP) establishing trigger points to mobilize “surge” fire suppression resources based upon fire danger.

- The USFS pre-deploys ground resources including wildland engines, bulldozers, and hand crews.
- Helene fuels conditions required a significant increase in suppression resources and a longer duration commitment.



Wildfire Response -- Lessons Learned

Aerial resources have been proven invaluable to early wildfire detection and rapid suppression of wildfires during initial attack.



Aircraft can also suppress wildfires in areas unsafe for ground resources and provide significant capability when defending communities and infrastructure.

Hazardous Fuel Reduction

Mechanical hazardous fuel reduction work has been a key component of reducing the wildfire risk in the post Helene fuels environment.

Specialized machinery is being used to open public roads, fire lines and critical access points.



Fuels Treatment Activities



COMPLETED AND ACTIVE PROJECTS

- Cleared ~500 miles of roads to support public access and wildfire response
- (10) Salvage & stewardship timber sales - 931 acres (WUI)
- (12) Miles of POD lines installed in advance of potential wildfires

PROPOSED PROJECTS PLANNED

- (26) Salvage & stewardship – 8,272 acres (WUI)
- Debris removal along roadways -2,750 acres (WUI)
- Prescribed burns-(9) New prescribed burns units totaling 5,673 acres targeting storm damaged areas
- POD line implementation-18 miles of proposed line construction

Prescribed Burning Accomplishments

The Forest Service has committed to restoring and increasing its prescribed fire accomplishments to remove hazardous fuels and support forest restoration

2025 total: 22 burns-8,971 acres

(Limited opportunities due to Helene fuels conditions)

2026 total: 47 burns-30,700 acres

(~50% in Helene impacted areas)

2027 proposed: 45,000 acres





Forest Service
U.S. DEPARTMENT OF AGRICULTURE

Community Wildfire Protection Plans: Strategies for Reducing Wildfire Risks and Enhancing Resilience

Effective approaches to safeguard communities from wildfires



CAROLINA
LAND & LAKES



- CLL is updating or creating CWPPs in 27 counties including EBCI Qualla Boundary
- In Helene impacted areas 237 Areas of Concern/Communities are identified to date.

Project Overview

Purpose of CWPPs



Collaborative Planning

CWPPs are created through collaboration among multiple community stakeholders to address wildfire risks effectively.

Risk Identification

CWPPs focus on identifying specific wildfire hazards and vulnerabilities within local communities.

Mitigation Prioritization

Plans prioritize mitigation actions such as fuel reduction and defensible space to enhance community safety.

Emergency Preparedness

CWPPs guide emergency planning to improve community response and resilience during wildfire events.

Identification of Priority Areas and Actions



Focused Mitigation Efforts

CWPPs identify priority areas for mitigation such as fuel breaks, prescribed burns, and educating communities.

Balanced Risk Assessment

Priorities are set based on risk assessments and stakeholder input balancing ecological, social, and economic factors.

Protecting Critical Areas

Plans focus on protecting residential neighborhoods, critical infrastructure, and evacuation routes near wildlands.

Integrated Short and Long Term Actions

Effective plans combine short- and long-term actions with measurable goals to reduce ignitions and enhance response.



Resources for Resilience: WNC Resiliency & Recovery Project

Ann DuPre Rogers and Ashley Putnam, Resources for Resilience





RESOURCES FOR RESILIENCE

LEARN • PRACTICE THRIVE

ResourcesForResilience.org

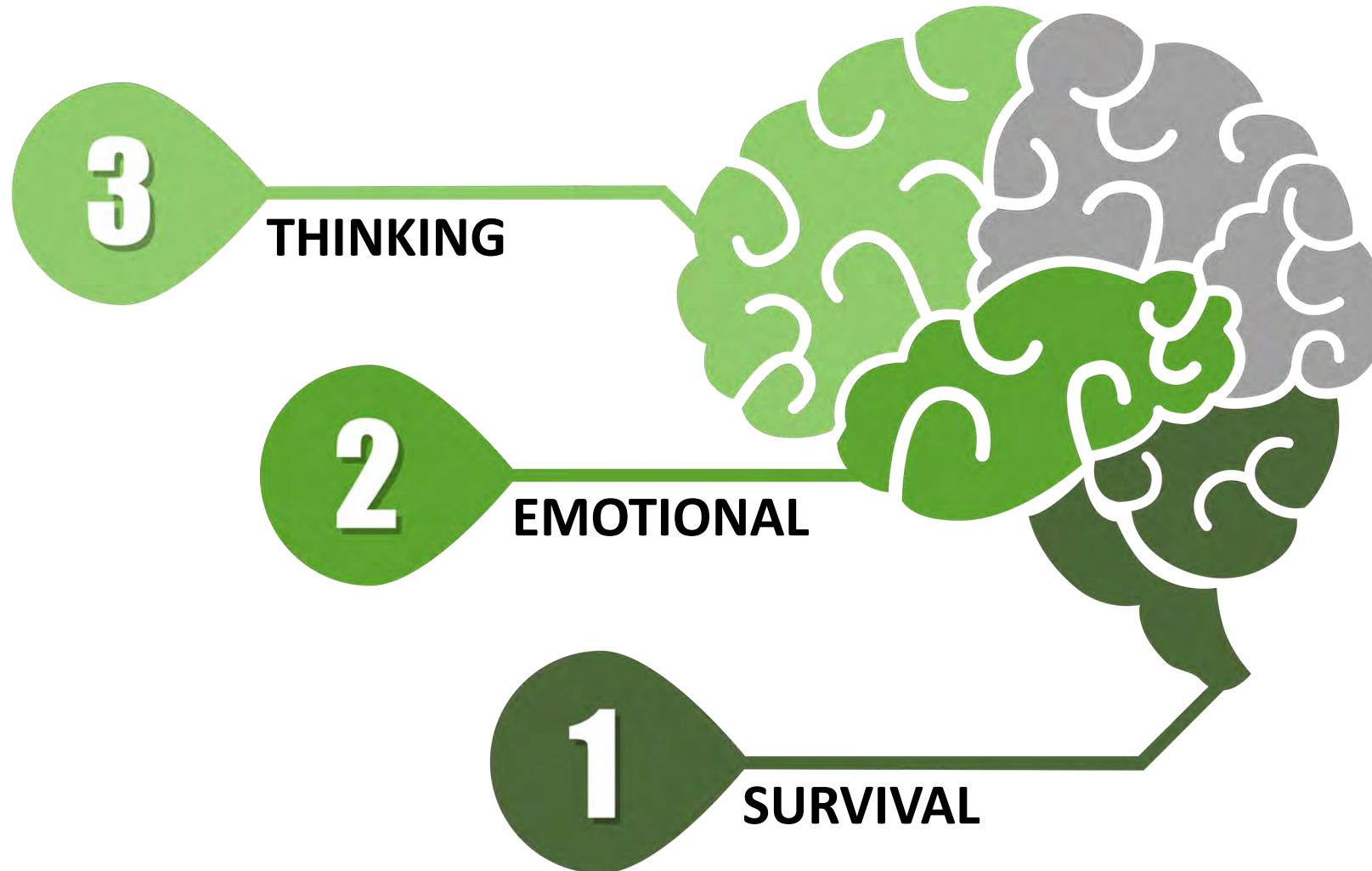


OUR MISSION AND VISION

Strengthening individual and community resilience through education, connection, and evidence-informed nervous system regulation tools.

Resources
FOR
Resilience

BRAIN ORGANIZATION





**WHEN WE ARE JOLTED,
WE HAVE BIG ENERGY –
WE DON'T WANT THAT ENERGY
TO GET STUCK**

**Resources
FOR
Resilience**

Photo: Jonathan Drake/ Reuters (2024); <https://www.pbs.org/newshour/nation/sheriff-helene-deaths-overcounted-by-as-many-as-30-in-n-c-county-surrounding-asheville>

GETTING RID OF
STRESS
ENERGY



Resources
FOR
Resilience

Photo: Travis Long/tlong@newsobserver.com (2024); <https://www.charlotteobserver.com/news/state/north-carolina/article293312804.html>

RAPID RESET

Do Some Heavy Work

Have you already seen people:

Organizing donations?

- Lifting boxes, sorting cans, or moving shelves

Doing yard work?

- Moving heavy things around, shoveling, raking, or mowing

Cleaning homes?

- Moving furniture or vacuuming

Boost The Impact!





RAPID RESET

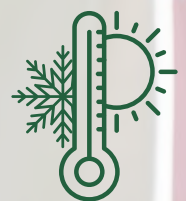
Orient

When you're worried, do you:

- Check out the space you're in?
- Look around the room for a friendly face?

Boost The Impact!

Twist and turn your head, neck, and torso as much as you can as you look around. Tune in to the sensations that come up as you do this.

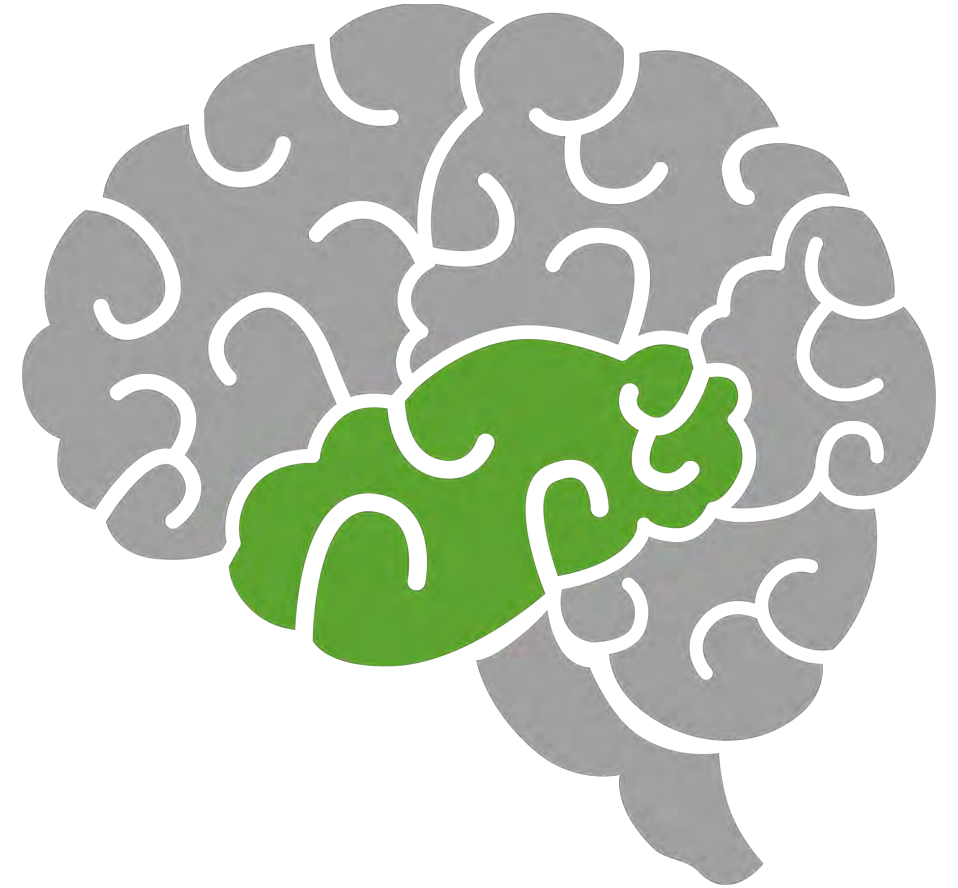


During hard times, we tend to notice only what is wrong and often miss what's helping

This can cause the hard story to get stuck on repeat, continually jolting us

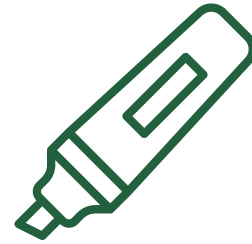
We want to widen the lens to notice something helpful that exists right beside the awful stuff

Doing this can help prevent long lasting effects of the hard thing



WIDENING OUR LENS

CONNECTING BY HIGHLIGHTING



Help the other person take in the full picture around them, not just the hard things, by asking:

WHAT'S GETTING YOU THROUGH?

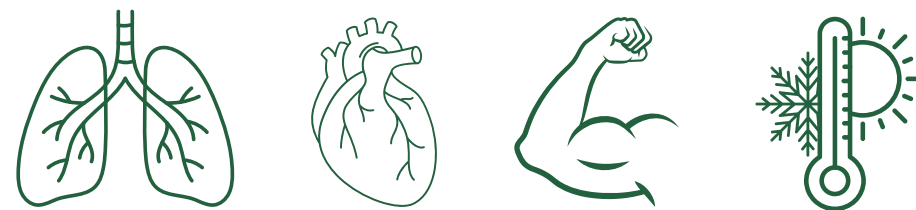
Who or what is **helping**?

When was the moment you knew you were **going to be okay**?

Has there been a moment in this when you have felt slightly calmer – even for 30 seconds?

Tell me more about that

CONNECTING TO PHYSICAL CUES



As they share, encourage them to notice any physical cues of safety. You can also point out any shifts you notice.

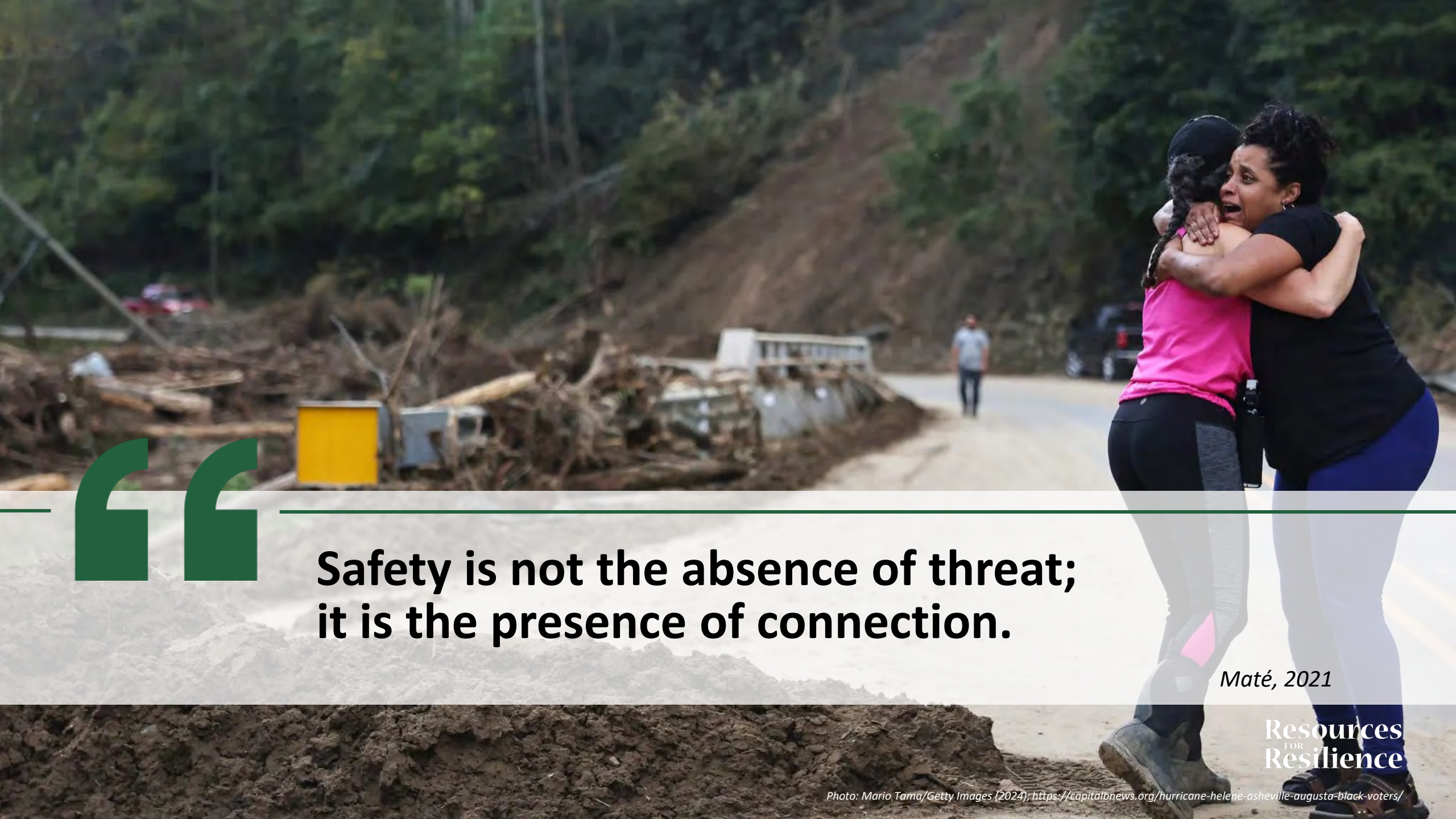
WHAT DO YOU NOTICE?

I saw you take a big sigh as you said that.

Do you notice anything about your muscle tension now?

I could see your shoulders relax a little.

Encourage them to spend 20 seconds noticing.



**Safety is not the absence of threat;
it is the presence of connection.**

Maté, 2021

**Resources
FOR
Resilience**



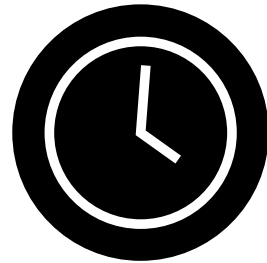
OVERWHELM TO ACTION

Without the ability to function, even well-resourced recovery efforts break down.

HURRICANE HELENE RESPONSE IMPACT SNAPSHOT

1,000

+



HOURS

of live, interactive trauma-informed programming

9,500

+



Participants

including residents, professionals, and volunteers across 25 counties

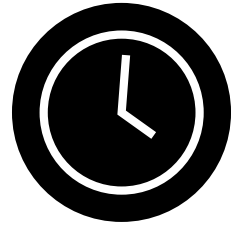
As of April 2026



STATEWIDE PROGRAMMING IMPACT SNAPSHOT

9,500

+



HOURS

of live, interactive trauma-informed programming

30,000

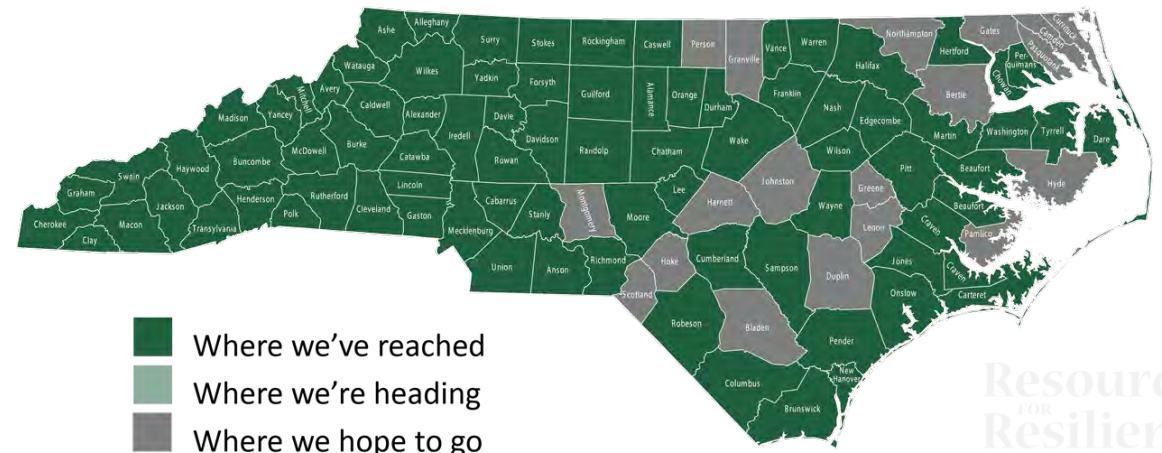
+



Participants

including residents, professionals, and volunteers across 81% of NC counties

As of April 2026



STATEWIDE PROGRAMMING AREAS OF IMPACT



DISASTER RESPONSE AND PREPAREDNESS

- Trauma-informed trainings, listening circles, and family-centered programs
- Concrete tools to help responders and communities prepare, stabilize, and function during crisis and recovery
- Builds readiness, resilience, and the capacity to support recovery under stress



WORKFORCE RESILIENCE AND BURNOUT PREVENTION

- Professional development for leaders, teams, frontline staff, and helping professionals
- Practical strategies to manage stress, prevent burnout, strengthen retention, and navigate uncertainty
- Builds healthier, more resilient workplaces, teams, and organizational culture



CHILD, FAMILY, AND EDUCATOR SUPPORT

- School, family, and community-based resilience and well-being programming
- Professional development and support for educators, caregivers, and youth-serving staff
- Builds resilience, connection, and environments where children and adults can thrive





**OUR STAYING
POWER IS
BUILT ON THE
PARTNERSHIPS
IN THIS ROOM**



5 out of 5 — highly recommend for anyone working with children or vulnerable populations.

*Participant, Cherokee Indian Hospital
Reconnect for Resilience™, September 2025*



**Resources
FOR
Resilience**

Photo: Tim Buchman (2017); <https://healthcaredesignmagazine.com/projects/natural-beauty-choerokee-indian-hospital/31409/>



Leading Through Hard Times was practical, engaging, and deeply relevant. After months of operating in Survival Brain at work, I left with helpful tools and the reminder that I'm not alone in what I've been carrying.

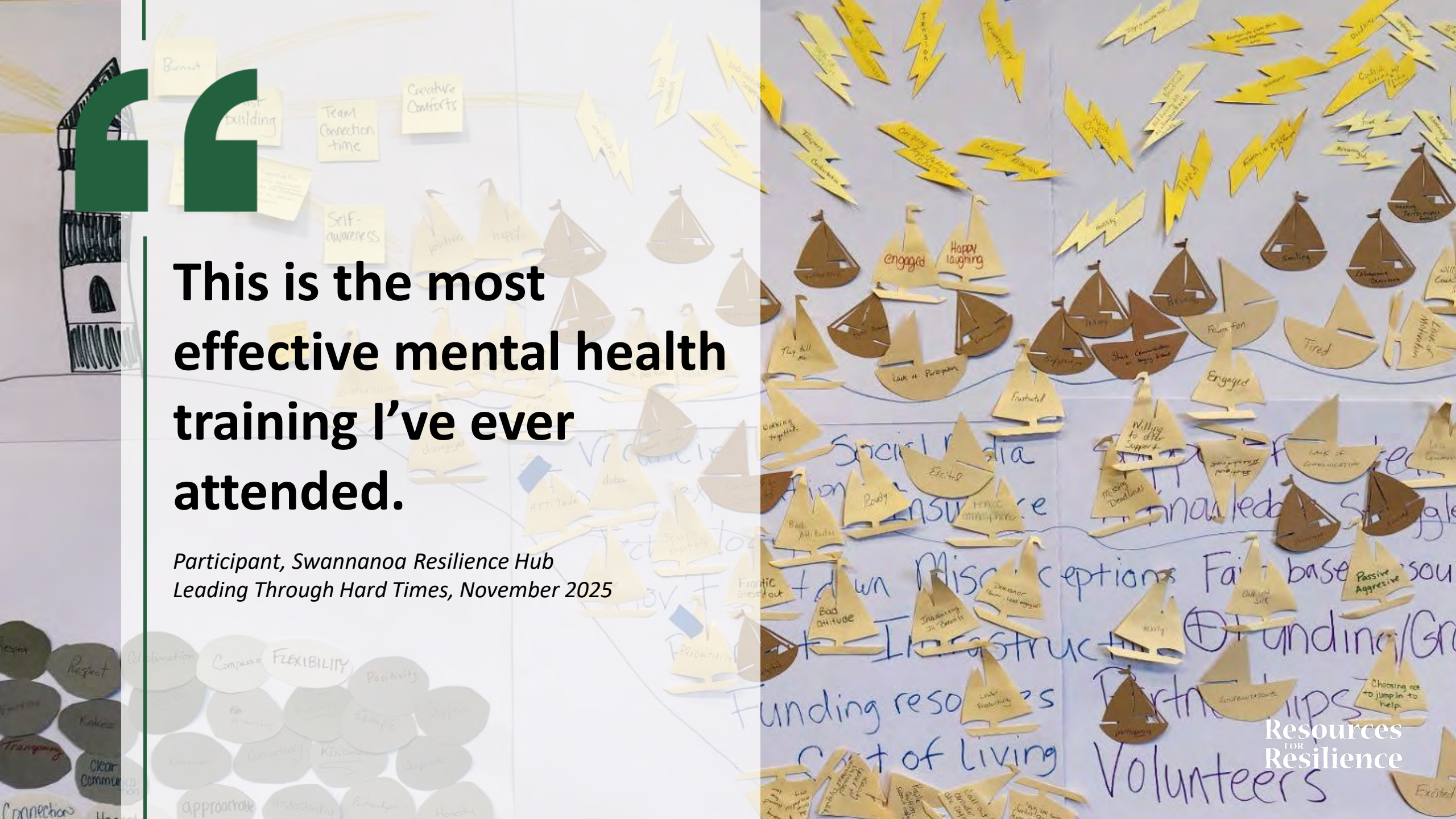
*Participant, Buncombe County Leadership
Leading Through Hard Times, August 2025*





As an advisor, I'm often helping students solve problems, but this training reminded me that sometimes the most important support we can offer — at work and in our personal lives — is helping someone feel truly heard.

*Participant, Caldwell Community College
Leading Through Hard Times, May 2026*



This is the most effective mental health training I've ever attended.

*Participant, Swannanoa Resilience Hub
Leading Through Hard Times, November 2025*

THANK YOU

Resources For Resilience

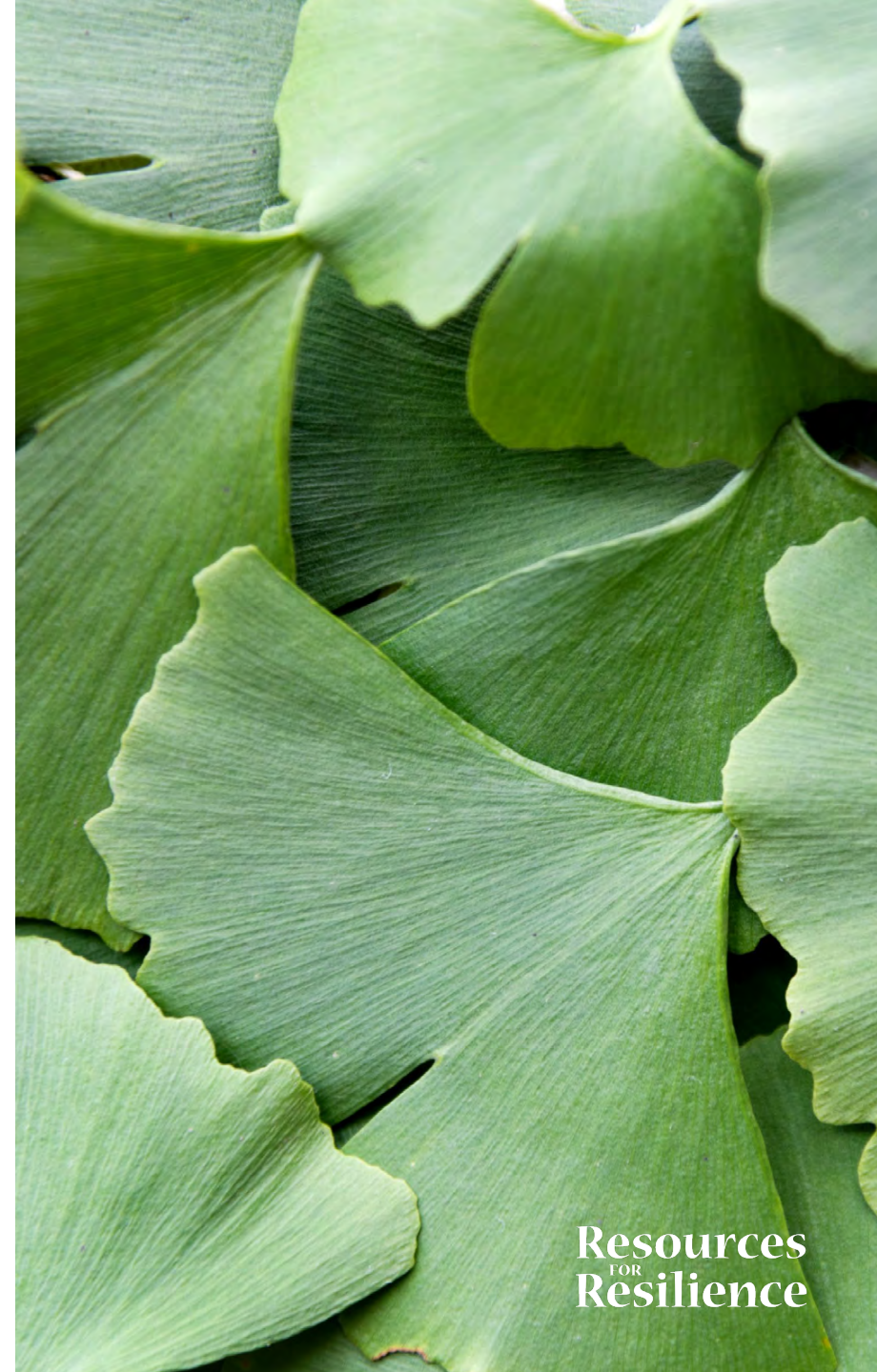
13½ Eagle Street, Suite K
Asheville, NC 28801

info@resourcesforresilience.org

828-367-7092 | ResourcesForResilience.org



**LEARN
MORE**



Resources
FOR
Resilience



Recovery Updates

Matt Calabria, GROW NC



Recovery Milestones in Communities Across WNC

Governor Stein Celebrates Reopening of Lake Lure

Local, state, and federal leaders traveled to Lake Lure last week to celebrate its restoration and reopening to the public this Memorial Day Weekend. In the year following Helene, more than 1.1 million tons of sand and sediment and over 100,000 cubic yards of debris were removed from the lake.



Hot Springs Public Library Reopens 19 Months After Hurricane Helene

The downtown Hot Springs branch of the Madison County Public Library system reopened in late April, following extensive renovations from damages sustained during Helene. The library is a critical community anchor and Wi-fi resource for residents and hikers alike. The Hot Springs library is one of just a few on the Appalachian Trail.

FEMA approves additional HMGP acquisitions, Public Assistance reimbursements

HMGP Approvals

- 164 addresses for voluntary acquisition approved
- Majority of applications submitted by the state are still pending approval by FEMA
- Last week's approvals total \$58.8 million for projects across Madison, Buncombe, and Mitchell counties

FEMA PA Reimbursements

- Total of \$43 million in reimbursements approved in the last week
- Brings total FEMA PA funding to date to \$1.883 billion
- Includes reimbursements for local governments, nonprofits, and state agencies



First Streamflow Rehabilitation Assistance Program (StRAP) Awards Announced

The NC Soil and Water Commission approved the first round of StRAP awards – over \$4.1M – to nine grantees:

- Alexander Soil & Water Conservation District (SWCD)
- Catawba SWCD
- Carolina Land and Lakes RC&D
- Graham County
- Iredell SWCD
- Macon SWCD
- Mountain Valleys RC&D
- Mecklenburg SWCD
- Surry SWCD

Funding will support stream debris removal, streambank stabilization, and stream restoration projects.

More than \$33M is still available. In the coming weeks, awards will be made to applicants in the counties hardest hit by Helene.



Deadline Extended - \$221M USDA block grant to assist agriculture and forestry producers



*North Carolina Department of
Agriculture & Consumer Services*

The block grant has four program categories, with an application required for each category in each county that a farmer or landowner qualifies for.

- Farm Infrastructure – cost-share assistance for farm structure repair or replacement and farm road or bridge repair and replacement.
- Future Economic Loss – cost-share assistance for economic loss for perennial crops, poultry and aquaculture operations.
- Market Loss – cost-share assistance for harvested or unharvested commodities or select value-added products in which value was reduced or destroyed by power outage.
- Timber Loss Relief Program – private timber landowners with at least 10 acres of timber loss.



Deadline to apply for all programs: June 12

Find program information and apply: ncagr.gov/agdisaster

Aerial Accessibility Grant applications due June 15

Funding to improve capacity for emergency preparedness, and to repair, replace, and restore damaged infrastructure at airports. \$20 million available with a max award of \$5 million per recipient.

Eligible applicants: People or units of local government that own an airport that is (i) currently in operation or (ii) was operational before Helene but is not operation now due to damage caused by Helene.

Airports must meet these requirements:

- Have fuel available 24/7
- The county where the airport is located must enter into an agreement granting the State untethered access to any facilities provided under the program;
- Have on-site aviation mechanics offering services to the public;
- During a state of emergency, it must be capable of remaining open 24/7

Airports classified as Commercial Service Airports by the Federal Aviation Administration are not eligible.



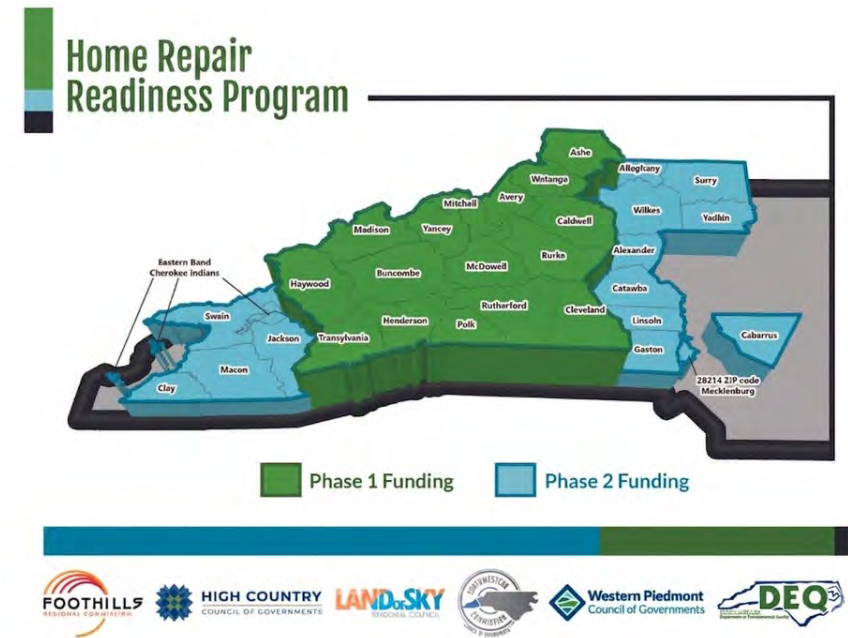
For more information: bit.ly/4tE1d0H

Deadline to apply: June 15

Western North Carolina Home Repair Readiness Program

- The NC Department of Environmental Quality allocated \$6 million to the Western Piedmont Council of Governments to provide weatherization readiness.
- Goal of the Program: to fix the essential health and safety issues caused or worsened by Helene so homeowners can access long-term energy efficiency programs and lower utility bills.
- What the program covers: Pre-weatherization repairs including, but not limited to, roof, wall, ceiling, floor, plumbing, and electrical repairs, moisture remediation, energy-efficient HVAC systems, and upgrading and reinforcing the building envelope.
- Who Qualifies: Income Qualified Residents in the Western North Carolina most-impacted counties.
- Eligible households may receive up to \$25,000 in repair assistance for essential fixes needed to support readiness repairs.
- Also recruiting interested contractors to perform the work on website.

For more information: wncready.org



So far, the program has repaired 115 homes with 56 in progress.

USDA Single-Family Housing Rural Disaster Home Repair Grants

Applications are available year-round while funding is available and are processed in the order in which they are received.

- Maximum grant award of \$32,420.
- Available to very-low income and low-income homeowners.
- Homes must be owner-occupied and located within an eligible rural area.
- Grant recipients must certify there is no duplication of benefits with other funding or awards. Contact a USDA home loan specialist in your area.
- A homeowner is qualified to apply if:
 - Property was damaged in an authorized Presidential Disaster Declaration since 2022, such as Helene, and;
 - The home must be homeowner occupied (occupancy after repair can be authorized).



Find program information and apply: bit.ly/Rural_Disaster_Home_Repair

Renew NC Commercial District Revitalization (CDR) Program for WNC

Application Period: April 6, 2026 – August 4, 2026

- For eligible local governments and nonprofit organizations to revitalize designated commercial districts damaged by Hurricane Helene
- \$40 million of the total \$111 million CDBG-DR allocation will be available in the first round
- Award amounts will range from \$500,000 to \$10 million per project.
- Will fund projects in HUD-identified and State-identified Most Impacted and Distressed (MID) areas
- Eligible activities include, but are not limited to:
 - Acquisition, demolition, site preparation, or rehabilitation of commercial structures
 - Assistance for small businesses for rehabilitation and physical improvements to their places of business;
 - Assistance for small businesses for rehabilitation and physical improvements to their places of business;
 - Facade improvements to private or public structures in commercial areas.



commercerecovery.nc.gov/renew-nc-programs/commercial-district-revitalization-program



NC Commerce Still Accepting Applications for Small Business Infrastructure Projects in WNC

More than \$25M remains of the \$55M appropriation from the NC General Assembly to assist small businesses by expediting infrastructure repairs impacting the operation and patronage of small businesses in the affected area. There is a max award per project of \$1M.

Eligibility: Local governments impacted by Hurricane Helene and designated under a major disaster declaration from Helene. Special consideration given to local governments in Tier 1 and Tier 2 Counties.

Timeline: Applications accepted on a rolling basis; awards announced:

- June 30, 2025 – *\$7.3m announced*
- November 12, 2025 – *\$13.8m announced*
- March 20, 2026 – *\$8.5m announced*
- June 30, 2026 (anticipated)



For more information: commerce.nc.gov/SmBIZ



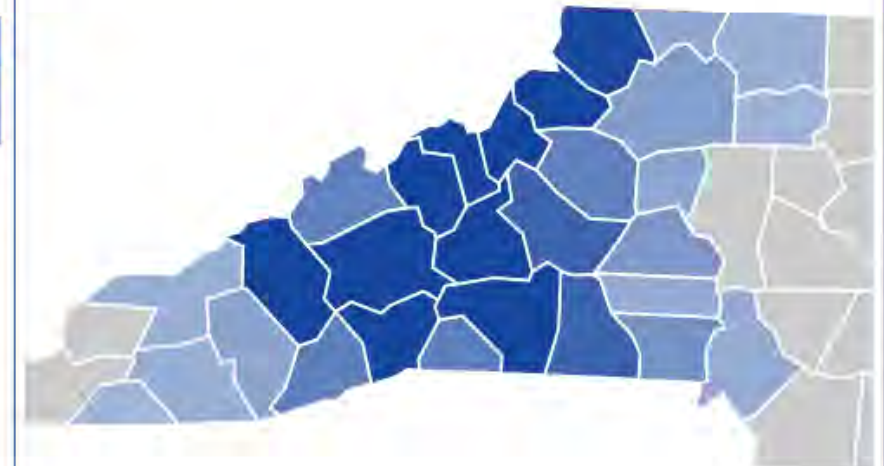
Renew NC Single-Family Housing Dashboard

5/19/2026 9:37:04 AM

Latest Data Refresh

Applications in Progress But Not Submitted	Total Applications Submitted	Total Active Applications	Inactive or Ineligible Applications
2,185	7,924	2,896 i	5,028 i

Applications by County



Application Submission Deadline
January 31, 2026

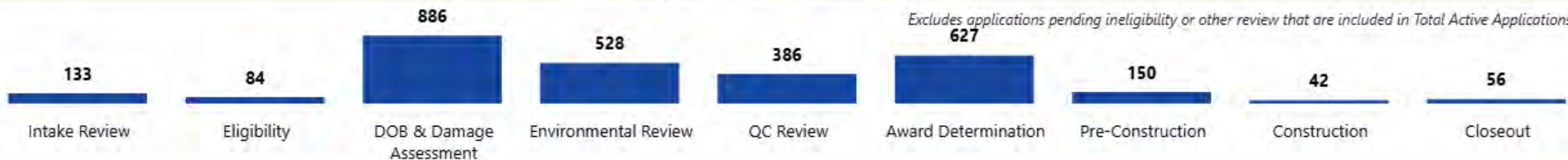
Verified Eligible Phase and Priority i

Phase	Priority 1	Priority 2	Priority 3	Priority 4	Total
Phase 1	1,479	246	115	16	1,856
Phase 2	215	73	12	7	307
Phase 3	139	5	N/A	N/A	144
Phase 4	456	16	N/A	N/A	472

Hover over the information bubble for Phase and Priority definitions.

Applications will be processed beginning with Phase 1, followed by Phase 2, etc.

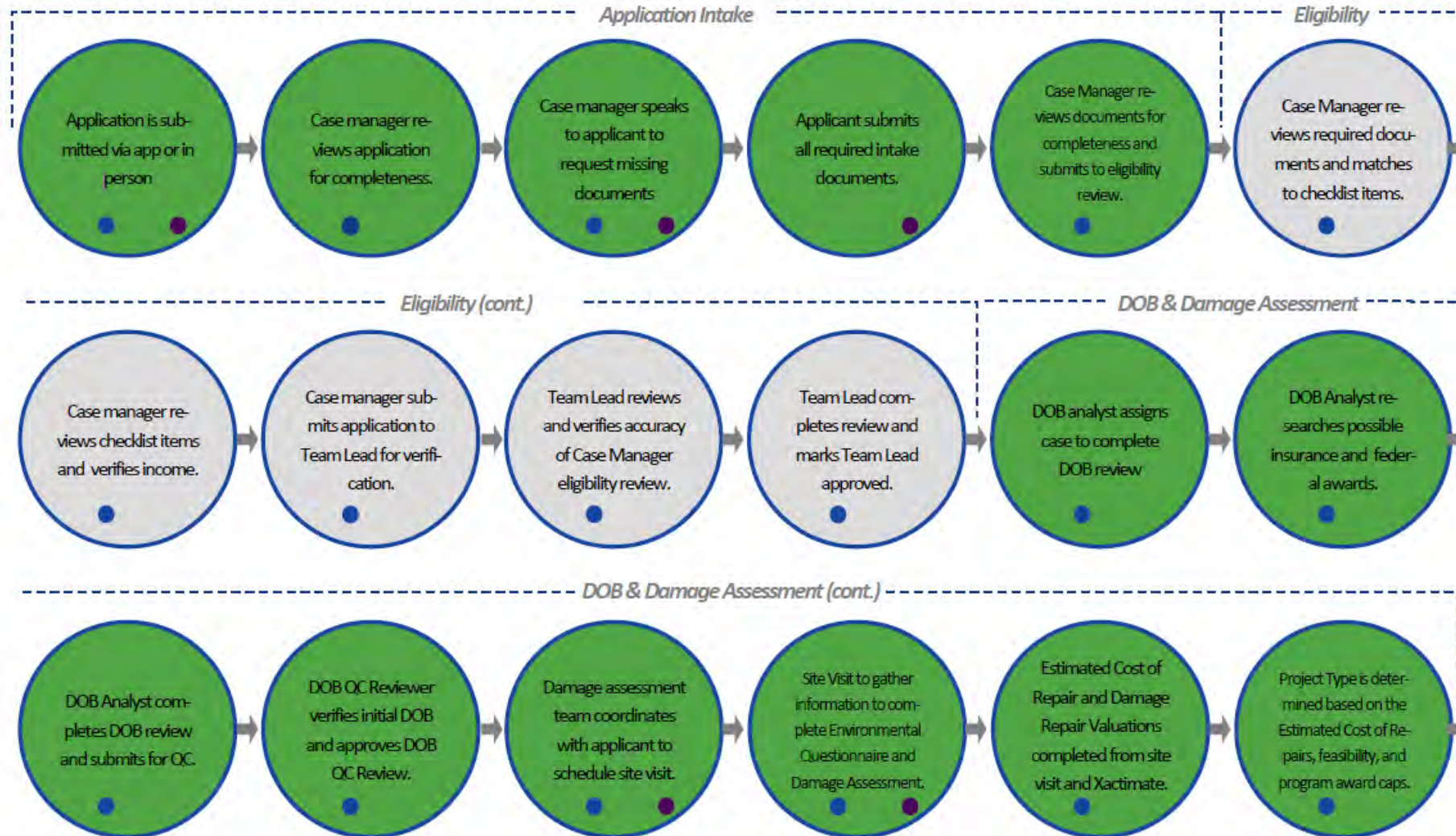
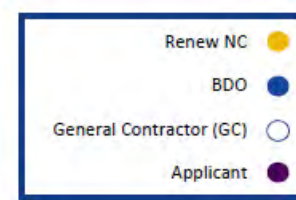
Active Applications by Workflow Status



Excludes applications pending ineligibility or other review that are included in Total Active Applications count.

RENEW NC SINGLE-FAMILY HOUSING PROGRAM

In-Depth Project Workflow *part 1 of 3*

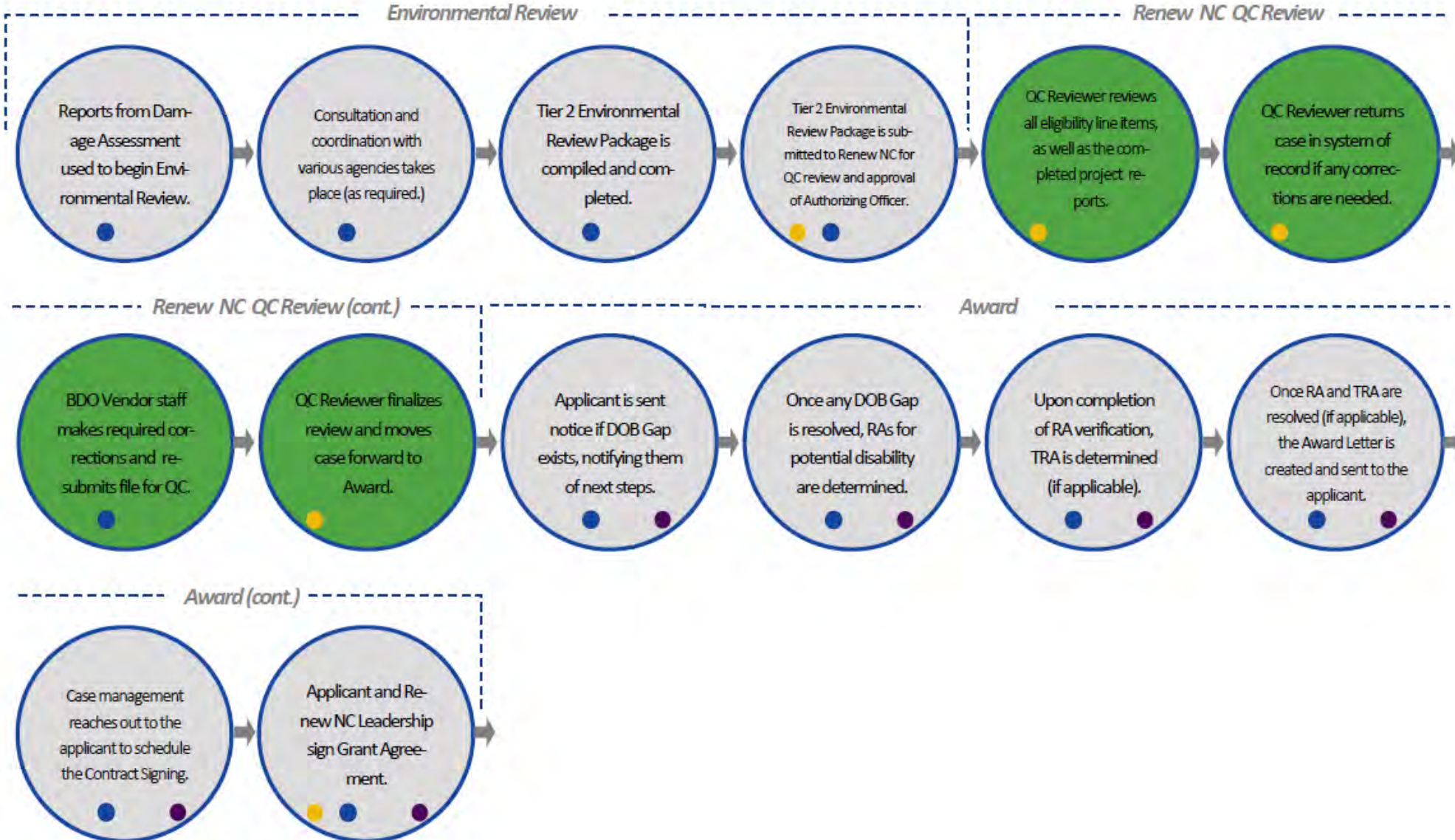


Abbreviations: Duplication of Benefits (DOB) - Notice to Proceed (NTP) - Quality Control (QC) - Temporary Relocation Assistance (TRA) - Reasonable Accommodation (RA)

RENEW NC SINGLE-FAMILY HOUSING PROGRAM

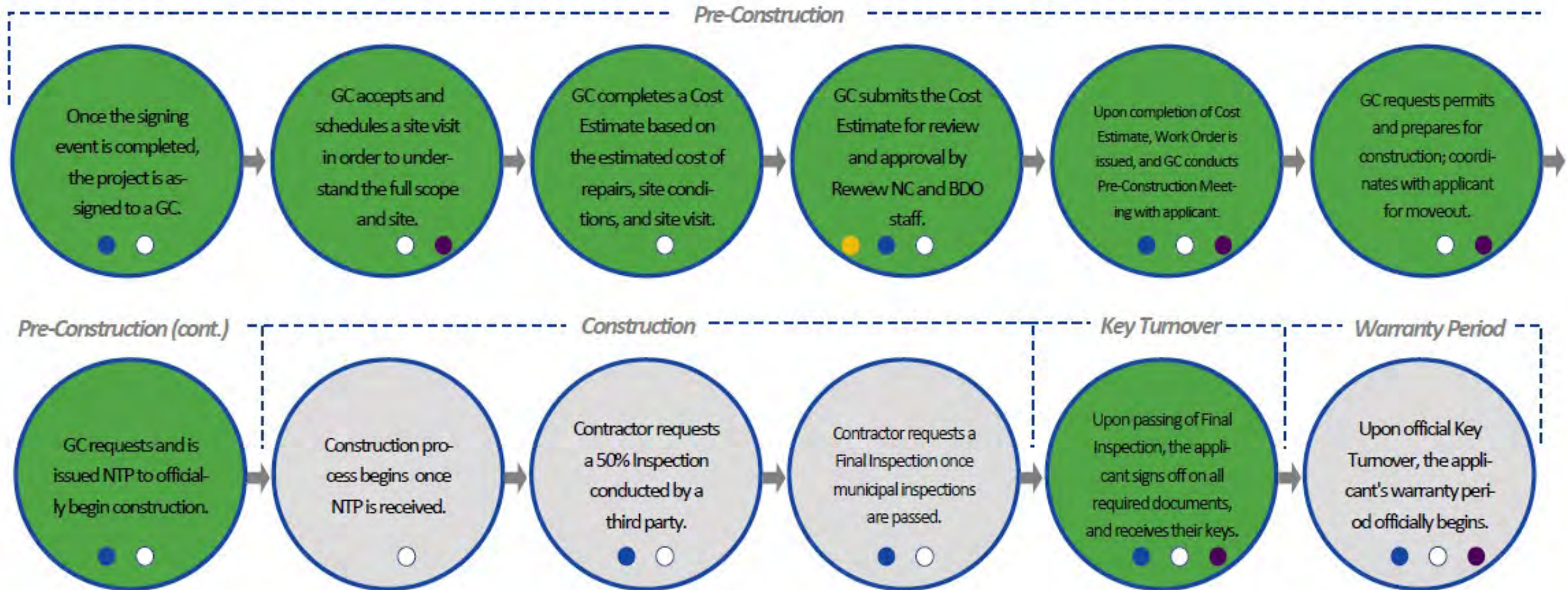
In-Depth Project Workflow *part 2 of 3*

Renew NC	●
BDO	●
General Contractor (GC)	○
Applicant	●



RENEW NC SINGLE-FAMILY HOUSING PROGRAM

In-Depth Project Workflow *part 3 of 3*



Engagement with Long-Term Recovery Groups and Local Governments



Community Collaborations for Temporary Relocation Assistance (TRA)

- Renew NC is committed to supporting applicants through the home repair, replacement, or reconstruction process. This includes ensuring applicants have explored all available relocation resources and options before state-funded TRA is used.
- State-funded TRA can pay for housing; it cannot be used for move-in, move-out, storage, pet boarding, and utilities. As such, Renew is collaborating with LTRGs and other nonprofit organizations across the region to share information and resource those needs.

Coordinating with Local Governments Around Renew NC Housing Programs

- The Division of Community Revitalization is meeting with local governments to share information and coordinate Renew NC's single-family housing program and the future launch of the multi-family and workforce housing for ownership programs.

RENEW NC SMALL RENTAL REHABILITATION PROGRAM PROGRAM DETAILS

Eligible Properties

- 1-4 units
- Landlord-owned properties in HUD and State MID areas
- Damaged or destroyed by Helene

Award Range

\$250K - \$1.5M

Requirements

Landlords must agree to provide affordable rent rates for a 10-year period for 80% or less AMI.

Apply

- Online at www.renewnc.org
- By phone at 1-888-791-0207
- Through the app



Wrap Up and Next Steps

Matt Calabria, GROW NC

Next meeting: **Monday, June 22**, 10 a.m. to 12 p.m.
(virtual)

Stay Connected

GROW NC is sharing recovery news, resources, progress metrics, and more.



STAY CONNECTED



wncrecovery.nc.gov



wncrecovery@nc.gov



bit.ly/GROW-NC-news



[@wncrecovery](https://twitter.com/wncrecovery)